

Anti-XBP1S antibody (188-287) (STJ11104868)
STJ11104868

GENERAL INFORMATION

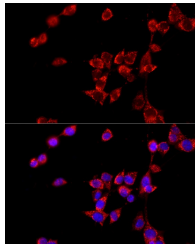
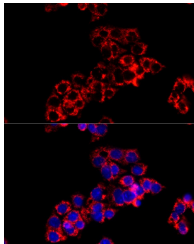
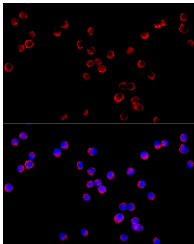
Product Type	Primary antibodies
Short Description	
Applications	WB/IF/ICC/ELISA
Host/Source	Rabbit
Reactivity	Human/Mouse/Rat

PRODUCT PROPERTIES

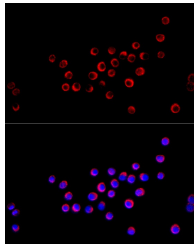
Clonality	Polyclonal
Clone ID	
Concentration	Lot specific
Conjugation	Unconjugated
Purification	Affinity purification
Dilution Range	WB:1:500-1:1000 IF/ICC:1:50-1:200 ELISA:Recommended starting concentration is 1 Mu g/mL. Please optimize the concentration based on your specific assay requirements.
Formulation	PBS with 0.09% Sodium Azide, 50% Glycerol, pH 7.3.
Isotype	IgG
Storage Instruction	Store at -20°C for up to 1 year from the date of receipt, and avoid repeat freeze-thaw cycles.

TARGET INFORMATION

Gene ID	7494
Gene Symbol	XBP1
Uniprot ID	XBP1_HUMAN
Immunogen	
Immunogen Region	188-287
Specificity	Recombinant fusion protein containing a sequence corresponding to amino acids 188-287 of human XBP1S. (NP_001073007.1).
Immunogen Sequence	SDSESDILLGILDNDLPVMF FKCPSPEPASLEELPEVYPE GPSSLPASLSLSVGTSSAKL EAINELIRFDHIYTKPLVLE IPSETESQANVVVKIEEAPL



Immunofluorescence analysis of NIH/3T3 cells using XBP1S Rabbit polyclonal antibody (STJ11104868) at dilution of 1:20 (40x lens). Secondary antibody: Cy3 Goat Anti-Rabbit IgG (H+L) at 1:500 dilution. Blue: DAPI for nuclear staining.



Immunofluorescence analysis of HT-29 cells using XBP1S Rabbit polyclonal antibody (STJ11104868) at dilution of 1:20 (40x lens). Secondary antibody: Cy3 Goat Anti-Rabbit IgG (H+L) at 1:500 dilution. Blue: DAPI for nuclear staining.

This product is suitable for in-vitro studies under the RESEARCH USE ONLY [RUO] licence. This product must not be used as for diagnostic or other medical purposes.
St John's Laboratory Ltd, Knowledge Dock Business Centre, University Way, London, E16 2RD | Tel: 0208 223 3081