

Anti-Cleaved-Asp214 antibody (201-300) (STJ11104861)

STJ11104861

GENERAL INFORMATION

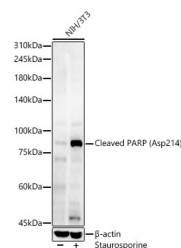
Product Type	Primary antibodies
Short Description	
Applications	WB/ELISA
Host/Source	Rabbit
Reactivity	Mouse

PRODUCT PROPERTIES

Clonality	Polyclonal
Clone ID	
Concentration	Lot specific
Conjugation	Unconjugated
Purification	Affinity purification
Dilution Range	WB:1:100-1:500 ELISA:Recommended starting concentration is 1 Mu g/mL. Please optimize the concentration based on your specific assay requirements.
Formulation	PBS with 0.05% Proclin300, 50% Glycerol, pH 7.3.
Isotype	IgG
Storage Instruction	Store at -20°C for up to 1 year from the date of receipt, and avoid repeat freeze-thaw cycles.

TARGET INFORMATION

Gene ID	
Gene Symbol	
Uniprot ID	
Immunogen	
Immunogen Region	201-300
Specificity	A synthetic peptide corresponding to a sequence within amino acids 201-300 of Mouse PARP (Asp214) (NP_031441.2).
Immunogen Sequence	AIKNEGKRKGDEVDGTDEVA KKKSKKGKDKDSSKLEKALK AQNELIWNKDELKKACSTN DLKELLIFNQVPSGESAI LDRVADGMAFGALLPCKECS



Western blot analysis of lysates from NIH/3T3 cells, using Cleaved PARP Rabbit polyclonal antibody (STJ11104861) at 1:400 dilution. NIH/3T3 cells were treated by staurosporine (1 uM) for 3 hour. Secondary antibody: HRP Goat Anti-Rabbit IgG (H+L) (STJ5000856) at 1:10000 dilution. Lysates/proteins: 25ug per lane. Blocking buffer: 3% nonfat dry milk in TBST. Detection: ECL Enhanced Kit. Exposure time: 90s.

This product is suitable for in-vitro studies under the RESEARCH USE ONLY [RUO] licence. This product must not be used as for diagnostic or other medical purposes.
St John's Laboratory Ltd, Knowledge Dock Business Centre, University Way, London, E16 2RD | Tel: 0208 223 3081