

Anti-MCU antibody (51-170) [S4859RM] (STJ11104859)

STJ11104859

GENERAL INFORMATION

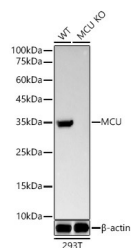
Product Type	Primary antibodies
Short Description	
Applications	WB/ELISA
Host/Source	Rabbit
Reactivity	Human/Mouse/Rat

PRODUCT PROPERTIES

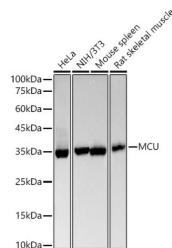
Clonality	Monoclonal
Clone ID	S4859RM
Concentration	Lot specific
Conjugation	Unconjugated
Purification	Affinity purification
Dilution Range	WB:1:10000-1:20000 ELISA:Recommended starting concentration is 1 Mu g/mL. Please optimize the concentration based on your specific assay requirements.
Formulation	PBS with 0.05% Proclin300, 0.05% BSA, 50% Glycerol, pH 7.3.
Isotype	IgG
Storage	Store at -20°C for up to 1 year from the date of receipt, and avoid repeat freeze-thaw cycles.
Instruction	

TARGET INFORMATION

Gene ID	90550
Gene Symbol	MCU
Uniprot ID	MCU_HUMAN
Immunogen	
Immunogen Region	51-170
Specificity	Recombinant fusion protein containing a sequence corresponding to amino acids 51-170 of human MCU (NP_612366.1). VHQRIASWQNLGAVYCSTV PSDDVTVYQNGLPVISVRL PSRRERCQFTLKPISDSVGV FLRQLQEEDRGIDRVAIYSP
Immunogen Sequence	DGVRVAASTGIDLLLDLDFK LVINDLTYHVRPPKRDLLSH



Western blot analysis of extracts from wild type (WT) and MCU knockout (KO) 293T (KO) cells, using MCU antibody (STJ11104859) at 1:20000 dilution. Secondary antibody: HRP Goat Anti-Rabbit IgG (H+L) (STJS000856) at 1:10000 dilution. Lysates/proteins: 25 Mu g per lane. Blocking buffer: 3% nonfat dry milk in TBST. Detection: ECL Basic Kit. Exposure time: 90s.



Western blot analysis of various lysates, using MCU antibody (STJ11104859) at 1:20000 dilution. Secondary antibody: HRP Goat Anti-Rabbit IgG (H+L) (STJS000856) at 1:10000 dilution. Lysates/proteins: 25 Mu g per lane. Blocking buffer: 3% nonfat dry milk in TBST. Detection: ECL Basic Kit. Exposure time: 90s.

This product is suitable for in-vitro studies under the RESEARCH USE ONLY [RUO] licence. This product must not be used as for diagnostic or other medical purposes.
St John's Laboratory Ltd, Knowledge Dock Business Centre, University Way, London, E16 2RD | Tel: 0208 223 3081