

Anti-PI3 Kinase p85 alpha/beta antibody (400-500) [S4858RM] (STJ11104858)

STJ11104858

GENERAL INFORMATION

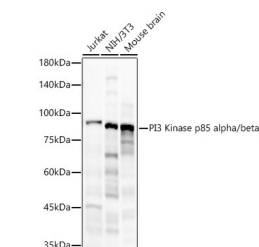
Product Type	Primary antibodies
Short Description	
Applications	WB/ELISA
Host/Source	Rabbit
Reactivity	Human/Mouse

PRODUCT PROPERTIES

Clonality	Monoclonal
Clone ID	S4858RM
Concentration	Lot specific
Conjugation	Unconjugated
Purification	Affinity purification
Dilution Range	WB:1:500-1:1000 ELISA:Recommended starting concentration is 1 Mu g/mL. Please optimize the concentration based on your specific assay requirements.
Formulation	PBS with 0.05% Proclin300, 0.05% BSA, 50% Glycerol, pH 7.3.
Isotype	IgG
Storage Instruction	Store at -20°C for up to 1 year from the date of receipt, and avoid repeat freeze-thaw cycles.

TARGET INFORMATION

Gene ID	5296 5295
Gene Symbol	PIK3R2 PIK3R1
Uniprot ID	P85B_HUMAN P85A_HUMAN
Immunogen	
Immunogen Region	400-500
Specificity	A synthetic peptide corresponding to a sequence within amino acids 400-500 of human PI3 Kinase p85 alpha/beta (NP_852664.1).
Immunogen Sequence	SVVELINHYRNESLAQYNPK LDVKLLYPVSKYQQDQVVE DNIEAVGKKLHEYNTQFQEK SREYDRLYEYTRTSQEIQM KRTAIEAFNETIKIFEEQCQ T



Western blot analysis of various lysates, using PI3 Kinase p85 alpha/beta Rabbit monoclonal antibody (STJ11104858) at 1:3000 dilution. Secondary antibody: HRP Goat Anti-Rabbit IgG (H+L) (STJ5000856) at 1:10000 dilution. Lysates/proteins: 25 Mu g per lane. Blocking buffer: 3% nonfat dry milk in TBST. Detection: ECL Basic Kit. Exposure time: 60s.

This product is suitable for in-vitro studies under the RESEARCH USE ONLY [RUO] licence. This product must not be used as for diagnostic or other medical purposes.

St John's Laboratory Ltd, Knowledge Dock Business Centre, University Way, London, E16 2RD | Tel: 0208 223 3081