

Anti-JUND antibody (200-300) [S4848RM] (STJ11104848)

STJ11104848

GENERAL INFORMATION

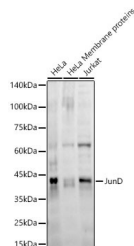
Product Type	Primary antibodies
Short Description	
Applications	WB/ELISA
Host/Source	Rabbit
Reactivity	Human

PRODUCT PROPERTIES

Clonality	Monoclonal
Clone ID	S4848RM
Concentration	Lot specific
Conjugation	Unconjugated
Purification	Affinity purification
Dilution Range	WB:1:1000-1:5000 ELISA:Recommended starting concentration is 1 Mu g/mL. Please optimize the concentration based on your specific assay requirements.
Formulation	PBS with 0.05% Proclin300, 0.05% BSA, 50% Glycerol, pH 7.3.
Isotype	IgG
Storage	Store at -20°C for up to 1 year from the date of receipt, and avoid repeat freeze-thaw cycles.
Instruction	

TARGET INFORMATION

Gene ID	3727
Gene Symbol	JUND
Uniprot ID	JUND_HUMAN
Immunogen	
Immunogen	200-300
Region	
Specificity	A synthetic peptide corresponding to a sequence within amino acids 200-300 of human JunD (NP_005345.3).
Immunogen	YAGGAGGAGGAATVAFAAEP VPFPFPPPPGALGPPRLAAL KDEPQTVPDVPSFGESPPLS PIDMDTQERIKAEKRLRNR
Sequence	IAASKCRKRKLERISRLEEK V



Western blot analysis of various lysates, using JunD antibody (STJ11104848) at 1:2000 dilution. Secondary antibody: HRP Goat Anti-Rabbit IgG (H+L) (STJS000856) at 1:10000 dilution. Lysates/proteins: 25 Mu g per lane. Blocking buffer: 3% nonfat dry milk in TBST. Detection: ECL Basic Kit. Exposure time: 180s.

This product is suitable for in-vitro studies under the RESEARCH USE ONLY [RUO] licence. This product must not be used as for diagnostic or other medical purposes.
St John's Laboratory Ltd, Knowledge Dock Business Centre, University Way, London, E16 2RD | Tel: 0208 223 3081