

Anti-CPT1A antibody (520-720) [S4846RM] (STJ11104846)
STJ11104846

GENERAL INFORMATION

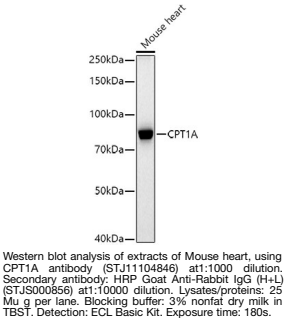
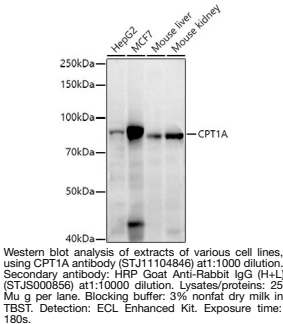
Product Type	Primary antibodies
Short Description	
Applications	WB/ELISA
Host/Source	Rabbit
Reactivity	Human

PRODUCT PROPERTIES

Clonality	Monoclonal
Clone ID	S4846RM
Concentration	Lot specific
Conjugation	Unconjugated
Purification	Affinity purification
Dilution	WB:1:1000-1:2000
Range	ELISA:Recommended starting concentration is 1 Mu g/mL. Please optimize the concentration based on your specific assay requirements.
Formulation	PBS with 0.05% Proclin300, 0.05% BSA, 50% Glycerol, pH 7.3.
Isotype	IgG
Storage	Store at -20°C for up to 1 year from the date of receipt, and avoid repeat freeze-thaw cycles.
Instruction	

TARGET INFORMATION

Gene ID	1374
Gene Symbol	CPT1A
Uniprot ID	CPT1A_HUMAN
Immunogen	
Immunogen Region	520-720
Specificity	Recombinant fusion protein containing a sequence corresponding to amino acids 520-720 of human CPT1A (NP_001867.2).
Immunogen Sequence	WDIPGECQEVETSLNTANL LANDVDFHSFPFVAFGKGII KKCRTPDAFVQLALQLAHY KDMGKFCLTYEASMTLRFRE GRTEIVRSCTTESCDFVRAM VDPAQTVQRLKFLKASEK HQHMYRLAMTGSIDRHLFC LYVWSKYLAVESPLKEVLS EPWRLSTSQTQQQVELFDL ENNPEYVSSGGGFGPVADDG Y



This product is suitable for in-vitro studies under the RESEARCH USE ONLY [RUO] licence. This product must not be used as for diagnostic or other medical purposes.
St John's Laboratory Ltd, Knowledge Dock Business Centre, University Way, London, E16 2RD | Tel: 0208 223 3081