

Anti-FTH1 antibody (84-183) [S4840RM] (STJ11104840)

STJ11104840

GENERAL INFORMATION

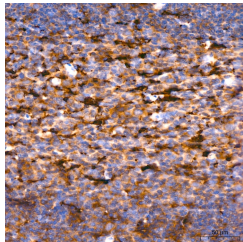
Product Type	Primary antibodies
Short Description	
Applications	IHC-P/ELISA
Host/Source	Rabbit
Reactivity	Human

PRODUCT PROPERTIES

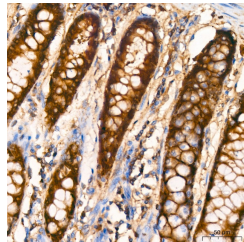
Clonality	Monoclonal
Clone ID	S4840RM
Concentration	Lot specific
Conjugation	Unconjugated
Purification	Affinity purification
Dilution Range	IHC-P:1:50-1:200 ELISA:Recommended starting concentration is 1 Mu g/mL. Please optimize the concentration based on your specific assay requirements.
Formulation	PBS with 0.02% Sodium Azide, 0.05% BSA, 50% Glycerol, pH 7.3.
Isotype	IgG
Storage	Store at -20°C for up to 1 year from the date of receipt, and avoid repeat freeze-thaw cycles.
Instruction	

TARGET INFORMATION

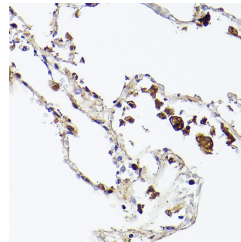
Gene ID	2495
Gene Symbol	FTH1
Uniprot ID	FRIH_HUMAN
Immunogen	
Immunogen Region	84-183
Specificity	A synthetic peptide corresponding to a sequence within amino acids 84-183 of human Ferritin Heavy Chain (P02794).
Immunogen Sequence	QDIKKPCDDWESGLNAMEC ALHLEKNVQSLLELHKLAT DKNDPHLCDFIETHYLNQV KAIKELGDHVTNLRKMGAP



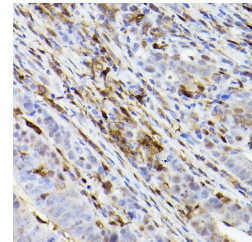
Immunohistochemistry analysis of Ferritin Heavy Chain in paraffin-embedded human tonsil tissue using Ferritin Heavy Chain Rabbit monoclonal antibody (STJ11104840) at a dilution of 1:200 (40x lens). High pressure antigen retrieval was performed with 0.01 M citrate buffer (pH 6.0) prior to immunohistochemistry staining.



Immunohistochemistry analysis of Ferritin Heavy Chain in paraffin-embedded human colon tissue using Ferritin Heavy Chain Rabbit monoclonal antibody (STJ11104840) at a dilution of 1:200 (40x lens). High pressure antigen retrieval was performed with 0.01 M citrate buffer (pH 6.0) prior to immunohistochemistry staining.



Immunohistochemistry analysis of paraffin-embedded human lung using Ferritin Heavy Chain Rabbit monoclonal antibody (STJ11104840) at dilution of 1:100 (40x lens). Perform high pressure antigen retrieval with 10 mM citrate buffer pH 6.0 before commencing with immunohistochemistry staining protocol.



Immunohistochemistry analysis of paraffin-embedded human colon carcinoma using Ferritin Heavy Chain Rabbit monoclonal antibody (STJ11104840) at dilution of 1:100 (40x lens). Perform high pressure antigen retrieval with 10 mM citrate buffer pH 6.0 before commencing with immunohistochemistry staining protocol.

This product is suitable for in-vitro studies under the RESEARCH USE ONLY [RUO] licence. This product must not be used as for diagnostic or other medical purposes.
St John's Laboratory Ltd, Knowledge Dock Business Centre, University Way, London, E16 2RD | Tel: 0208 223 3081