

Anti-CLU antibody (314-449) [S4802RM] (STJ11104802)

STJ11104802

GENERAL INFORMATION

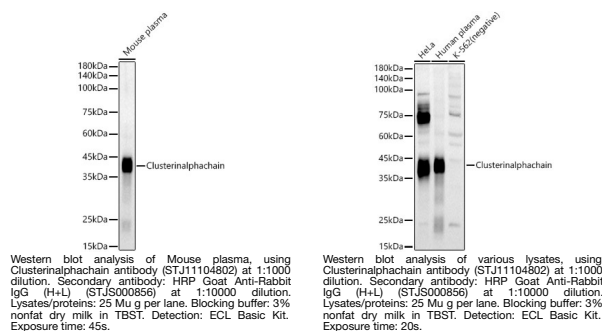
Product Type	Primary antibodies
Short Description	
Applications	WB/ELISA
Host/Source	Rabbit
Reactivity	Human/Mouse

PRODUCT PROPERTIES

Clonality	Monoclonal
Clone ID	S4802RM
Concentration	Lot specific
Conjugation	Unconjugated
Purification	Affinity purification
Dilution	WB:1:500-1:1000
Range	ELISA:Recommended starting concentration is 1 μ g/mL. Please optimize the concentration based on your specific assay requirements.
Formulation	PBS with 0.05% Proclin300, 0.05% BSA, 50% Glycerol, pH 7.3.
Isotype	IgG
Storage	Store at -20°C for up to 1 year from the date of receipt, and avoid repeat freeze-thaw cycles.
Instruction	

TARGET INFORMATION

Gene ID	1191
Gene Symbol	CLU
Uniprot ID	CLUS_HUMAN
Immunogen	
Immunogen Region	314-449
Specificity	Recombinant fusion protein containing a sequence corresponding to amino acids 314-449 of human Clusterin alpha chain (NP_001822.3).
Immunogen Sequence	STNNPSQAKLRREDESQV AERLTRKYNELLKSYQWKML NTSSLLEQLNEQFNWVSRLA NLTQGEDQYYLRVTTVASHT SDSDVPSGVTEVVKLFDS D PITVTPVEVSRKNPKFMET VAEKALQEYRKKHREE



This product is suitable for in-vitro studies under the RESEARCH USE ONLY [RUO] licence. This product must not be used as for diagnostic or other medical purposes.
St John's Laboratory Ltd, Knowledge Dock Business Centre, University Way, London, E16 2RD | Tel: 0208 223 3081