

Anti-Complement C3 antibody (1364-1663) [S4784RM] (STJ11104784)

STJ11104784

GENERAL INFORMATION

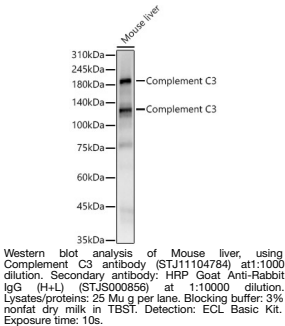
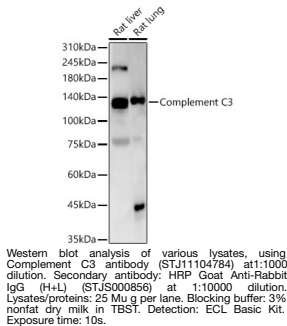
Product Type	Primary antibodies
Short Description	
Applications	WB/ELISA
Host/Source	Rabbit
Reactivity	Mouse/Rat

PRODUCT PROPERTIES

Clonality	Monoclonal
Clone ID	S4784RM
Concentration	Lot specific
Conjugation	Unconjugated
Purification	Affinity purification
Dilution	WB:1:1000-1:6000
Range	ELISA:Recommended starting concentration is 1 Mu g/mL. Please optimize the concentration based on your specific assay requirements.
Formulation	PBS with 0.05% Proclin300, 0.05% BSA, 50% Glycerol, pH 7.3.
Isotype	IgG
Storage	Store at -20°C for up to 1 year from the date of receipt, and avoid repeat freeze-thaw cycles.
Instruction	

TARGET INFORMATION

Gene ID	12266
Gene Symbol	C3
Uniprot ID	CO3_MOUSE
Immunogen	
Immunogen Region	1364-1663
Specificity	Recombinant fusion protein containing a sequence corresponding to amino acids 1364-1663 of mouse Complement C3 (NP_033908.2).
Immunogen Sequence	RVSIRPAPETAKKPEEAKNT MFLEICTKYLGDVDATMSIL DISMMTGFAPDTKDLELLAS GVDRIYSKYEMNKAFSNKNT LIIVLEKISHTTEEDCLTFKV HQYFNVGLIQPGSVKVSYY NLEESCTRFYHPEKDDGMLS KLCHSEMCRCAEENCFMQQS KEKINLNVRLDKACEPGVDY VYKTELNIELDDFDEYTM TIQQVIKSGSDEVQAGQQRK FISHIKCRNALKLQKGKKY



This product is suitable for in-vitro studies under the RESEARCH USE ONLY [RUO] licence. This product must not be used as for diagnostic or other medical purposes.
St John's Laboratory Ltd, Knowledge Dock Business Centre, University Way, London, E16 2RD | Tel: 0208 223 3081