

Anti-CMTM6 antibody (84-183) [S4775RM] (STJ11104775)

STJ11104775

GENERAL INFORMATION

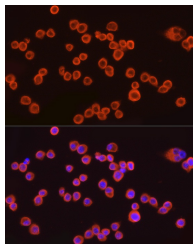
Product Type	Primary antibodies
Short Description	
Applications	WB/IF/ICC/ELISA
Host/Source	Rabbit
Reactivity	Human/Mouse

PRODUCT PROPERTIES

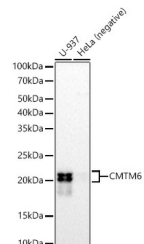
Clonality	Monoclonal
Clone ID	S4775RM
Concentration	Lot specific
Conjugation	Unconjugated
Purification	Affinity purification
Dilution Range	WB:1:2000-1:10000 IF/ICC:1:50-1:200 ELISA:Recommended starting concentration is 1 µg/mL. Please optimize the concentration based on your specific assay requirements.
Formulation	PBS with 0.05% Proclin300, 0.05% BSA, 50% Glycerol, pH 7.3.
Isotype	IgG
Storage Instruction	Store at -20°C for up to 1 year from the date of receipt, and avoid repeat freeze-thaw cycles.

TARGET INFORMATION

Gene ID	54918
Gene Symbol	CMTM6
Uniprot ID	CKLF6_HUMAN
Immunogen	
Immunogen Region	84-183
Specificity	A synthetic peptide corresponding to a sequence within amino acids 84-183 of human CMTM6 (NP_060271.1).
Immunogen Sequence	LILIVYCTPFYERVDTTKVK SSDFYITLGTGCVLLASII FVSTHDRTSAEIAIVFGFI ASFMFLLDFTIMLYEKRQES QLRKPENTTAAEALTEPLNA



Immunofluorescence analysis of RAW264.7 using CMTM6 Rabbit monoclonal antibody (STJ11104775) at dilution of 1:100 (40x lens). Blue: DAPI for nuclear staining.



Western blot analysis of various lysates, using CMTM6 antibody (STJ11104775) at 1:10000 dilution. Secondary antibody: HRP Goat Anti-Rabbit IgG (H+L) (STJ3000856) at 1:10000 dilution. Lysates/proteins: 25 µg per lane. Blocking buffer: 3% nonfat dry milk in TBST. Detection: ECL Basic Kit. Exposure time: 180s.

This product is suitable for in-vitro studies under the RESEARCH USE ONLY [RUO] licence. This product must not be used as for diagnostic or other medical purposes.
St John's Laboratory Ltd, Knowledge Dock Business Centre, University Way, London, E16 2RD | Tel: 0208 223 3081