

**Anti-NKX2-1 antibody (2-1) [S4774RM] (STJ11104774)**  
STJ11104774

**GENERAL INFORMATION**

<b>Product Type</b>	Primary antibodies
<b>Short Description</b>	
<b>Applications</b>	IHC-P/ELISA
<b>Host/Source</b>	Rabbit
<b>Reactivity</b>	Human/Mouse/Rat

**PRODUCT PROPERTIES**

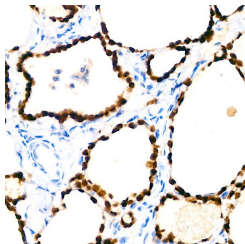
<b>Clonality</b>	Monoclonal
<b>Clone ID</b>	S4774RM
<b>Concentration</b>	Lot specific
<b>Conjugation</b>	Unconjugated
<b>Purification</b>	Affinity purification
<b>Dilution Range</b>	IHC-P:1:50-1:200 ELISA:Recommended starting concentration is 1 $\mu$ g/mL. Please optimize the concentration based on your specific assay requirements.
<b>Formulation</b>	PBS with 0.02% Sodium Azide, 0.05% BSA, 50% Glycerol, pH 7.3.
<b>Isotype</b>	IgG
<b>Storage</b>	Store at -20°C for up to 1 year from the date of receipt, and avoid repeat freeze-thaw cycles.
<b>Instruction</b>	

**TARGET INFORMATION**

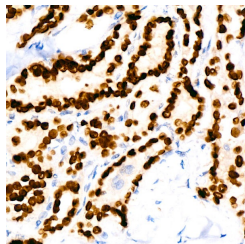
<b>Gene ID</b>	7080
<b>Gene Symbol</b>	NKX2-1
<b>Uniprot ID</b>	NKX21_HUMAN
<b>Immunogen</b>	
<b>Immunogen</b>	2-1
<b>Region</b>	
<b>Specificity</b>	Recombinant protein of human NKX2-1
<b>Immunogen</b>	MSMSPKHTTTFSVSDILSPL EESYKVKVGMEGGGLGAPLAA YRQGQAAPPTAAMQQHAVGH HGAVTAAYHMTAAGVPQLSH
<b>Sequence</b>	SAVGGYCNGNLGNMSELPPY



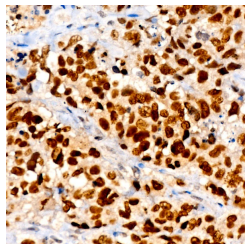
Immunohistochemistry analysis of paraffin-embedded mouse lung using NKX2-1 Rabbit monoclonal antibody (STJ11104774) at dilution of 1:100 (40x lens). Perform high pressure antigen retrieval with 10 mM citrate buffer pH 6.0 before commencing with immunohistochemistry staining protocol.



Immunohistochemistry analysis of paraffin-embedded human thyroid using NKX2-1 Rabbit monoclonal antibody (STJ11104774) at dilution of 1:100 (40x lens). Perform high pressure antigen retrieval with 10 mM citrate buffer pH 6.0 before commencing with immunohistochemistry staining protocol.



Immunohistochemistry analysis of paraffin-embedded human thyroid cancer using NKX2-1 Rabbit monoclonal antibody (STJ11104774) at dilution of 1:100 (40x lens). Perform high pressure antigen retrieval with 10 mM citrate buffer pH 6.0 before commencing with immunohistochemistry staining protocol.



Immunohistochemistry analysis of paraffin-embedded Human lung adenocarcinoma using NKX2-1 Rabbit monoclonal antibody (STJ11104774) at dilution of 1:100 (40x lens). Perform high pressure antigen retrieval with 10 mM citrate buffer pH 6.0 before commencing with immunohistochemistry staining protocol.

This product is suitable for in-vitro studies under the RESEARCH USE ONLY [RUO] licence. This product must not be used as for diagnostic or other medical purposes.  
St John's Laboratory Ltd, Knowledge Dock Business Centre, University Way, London, E16 2RD | Tel: 0208 223 3081