

Anti-ESR1 antibody (100-200) [S4746RM] (STJ11104746)

STJ11104746

GENERAL INFORMATION

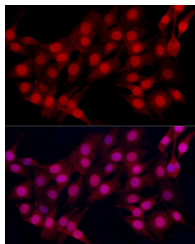
Product Type	Primary antibodies
Short Description	
Applications	IF/ICC/ELISA
Host/Source	Rabbit
Reactivity	Mouse/Rat

PRODUCT PROPERTIES

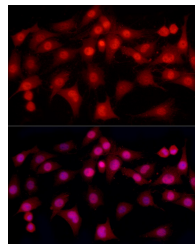
Clonality	Monoclonal
Clone ID	S4746RM
Concentration	Lot specific
Conjugation	Unconjugated
Purification	Affinity purification
Dilution Range	IF/ICC: 1:50-1:200 ELISA: Recommended starting concentration is 1 µg/mL. Please optimize the concentration based on your specific assay requirements.
Formulation	PBS with 0.05% Proclin300, 0.05% BSA, 50% Glycerol, pH 7.3.
Isotype	IgG
Storage	Store at -20°C for up to 1 year from the date of receipt, and avoid repeat freeze-thaw cycles.
Instruction	

TARGET INFORMATION

Gene ID	2099
Gene Symbol	ESR1
Uniprot ID	ESR1_HUMAN
Immunogen	
Immunogen Region	100-200
Specificity	A synthetic peptide corresponding to a sequence within amino acids 100-200 of human ESR Alpha (NP_000116.2).
Immunogen Sequence	LNSVSPSPMLLLHPPQLSP FLQPHGQQVPYYLENPSGY TVREAGPPAFYRPNSDNRQ GGRERLASTNDKGSMMAMESA KETRYCAVCNDYASGYHYGV W



Immunofluorescence analysis of NIH/3T3 using ESR Alpha Rabbit monoclonal antibody (STJ11104746) at dilution of 1:100 (40x lens). Blue: DAPI for nuclear staining.



Immunofluorescence analysis of C6 using ESR Alpha Rabbit monoclonal antibody (STJ11104746) at dilution of 1:100 (40x lens). Blue: DAPI for nuclear staining.