

Anti-CD69 antibody (62-199) [S4741RM] (STJ11104741)

STJ11104741

GENERAL INFORMATION

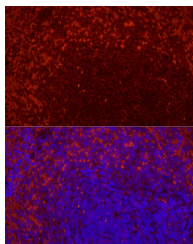
Product Type	Primary antibodies
Short Description	
Applications	WB/IF/ICC/ELISA
Host/Source	Rabbit
Reactivity	Mouse/Rat

PRODUCT PROPERTIES

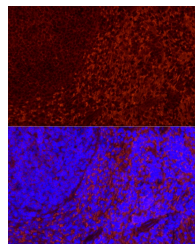
Clonality	Monoclonal
Clone ID	S4741RM
Concentration	Lot specific
Conjugation	Unconjugated
Purification	Affinity purification
Dilution	WB:1:2000-1:4000
Range	IF/CC:1:50-1:200
	ELISA:Recommended starting concentration is 1 Mu g/mL. Please optimize the concentration based on your specific assay requirements.
Formulation	PBS with 0.05% Proclin300, 0.05% BSA, 50% Glycerol, pH 7.3.
Isotype	IgG
Storage Instruction	Store at -20°C for up to 1 year from the date of receipt, and avoid repeat freeze-thaw cycles.

TARGET INFORMATION

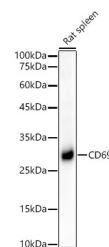
Gene ID	969
Gene Symbol	CD69
Uniprot ID	CD69_HUMAN
Immunogen	
Immunogen Region	62-199
Specificity	Recombinant fusion protein containing a sequence corresponding to amino acids 62-199 of human CD69 (NP_001772.1).
Immunogen Sequence	SVGQYNCPGQYTFMPSDSH VSSCSEDWVG YQRKCYFIST VKRSWTS AQNACSEHGATLA VIDSEKDMNFKRYAGREEH VWGLKKEPGHPWKWSNGKEF NNWFNVTGSDKCVFLKNTVE SSMECEKNLYWICNKPYPK



Immunofluorescence analysis of rat spleen using CD69 Rabbit monoclonal antibody (STJ11104741) at dilution of 1:200 (40x lens). Blue: DAPI for nuclear staining.



Immunofluorescence analysis of mouse spleen using CD69 Rabbit monoclonal antibody (STJ11104741) at dilution of 1:200 (40x lens). Blue: DAPI for nuclear staining.



Western blot analysis of Rat spleen, using CD69 antibody (STJ11104741) at 1:4000 dilution. Secondary antibody: HRP Goat Anti-Rabbit IgG (H+L) (STJS000856) at 1:10000 dilution. Lysates/proteins: 25 Mu g per lane. Blocking buffer: 3% nonfat dry milk in TBST. Detection: ECL Basic Kit. Exposure time: 90s.

This product is suitable for in-vitro studies under the RESEARCH USE ONLY [RUO] licence. This product must not be used as for diagnostic or other medical purposes.
St John's Laboratory Ltd, Knowledge Dock Business Centre, University Way, London, E16 2RD | Tel: 0208 223 3081