

Anti-PAX8 antibody (200-300) [S4737RM] (STJ11104737)

STJ11104737

GENERAL INFORMATION

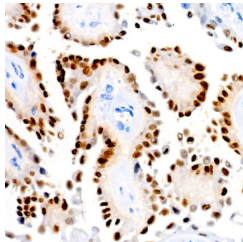
Product Type	Primary antibodies
Short Description	
Applications	IHC-P/ELISA
Host/Source	Rabbit
Reactivity	Human

PRODUCT PROPERTIES

Clonality	Monoclonal
Clone ID	S4737RM
Concentration	Lot specific
Conjugation	Unconjugated
Purification	Affinity purification
Dilution Range	IHC-P:1:100-1:500 ELISA: Recommended starting concentration is 1 µg/mL. Please optimize the concentration based on your specific assay requirements.
Formulation	PBS with 0.05% Proclin300, 0.05% BSA, 50% Glycerol, pH 7.3.
Isotype	IgG
Storage	Store at -20°C for up to 1 year from the date of receipt, and avoid repeat freeze-thaw cycles.
Instruction	

TARGET INFORMATION

Gene ID	7849
Gene Symbol	PAX8
Uniprot ID	PAX8_HUMAN
Immunogen	
Immunogen Region	200-300
Specificity	A synthetic peptide corresponding to a sequence within amino acids 200-300 of human PAX8 (NP_003457.1).
Immunogen Sequence	DSDQDSCRLSIDSQSSSGP RKHLRTDAFSQHHLEPCP FERQHYPEAYASPSHTKGEQ GLYPLPLLNSTLDDGKATLT PSNTPLGRNLSTHTQYPWA D



Immunohistochemistry analysis of PAX8 in paraffin-embedded human thyroid cancer using PAX8 Rabbit monoclonal antibody (STJ11104737) at dilution of 1:100 (40x lens). Perform high pressure antigen retrieval with 10 mM citrate buffer pH 6.0 before commencing with immunohistochemistry staining protocol.