

Anti-TSG101 antibody (291-390) (STJ11104735)

STJ11104735

GENERAL INFORMATION

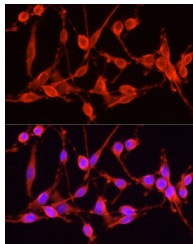
Product Type	Primary antibodies
Short Description	
Applications	WB/IF/ICC/ELISA
Host/Source	Rabbit
Reactivity	Human/Mouse/Rat

PRODUCT PROPERTIES

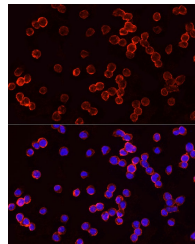
Clonality	Polyclonal
Clone ID	
Concentration	Lot specific
Conjugation	Unconjugated
Purification	Affinity purification
Dilution Range	WB:1:500-1:1000 IF/ICC:1:50-1:200 ELISA:Recommended starting concentration is 1 Mu g/mL. Please optimize the concentration based on your specific assay requirements.
Formulation	PBS with 0.05% Proclin300, 50% Glycerol, pH 7.3.
Isotype	IgG
Storage Instruction	Store at -20°C for up to 1 year from the date of receipt, and avoid repeat freeze-thaw cycles.

TARGET INFORMATION

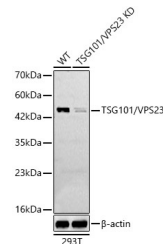
Gene ID	7251
Gene Symbol	TSG101
Uniprot ID	TS101_HUMAN
Immunogen	
Immunogen Region	291-390
Specificity	A synthetic peptide corresponding to a sequence within amino acids 291-390 of human TSG101/VPS23 (NP_006283.1). LKKKDEELSSALEKMENQSE NNDIDEVIPTAPLYKQLN LYAEENAIEDTIFYLGEALR RGVLDLDVFLKHVRLLSRKQ
Immunogen Sequence	FQLRALMQKARKTAGLSLDLY



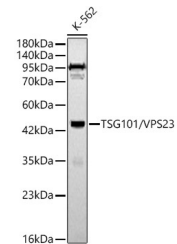
Immunofluorescence analysis of PC-12 cells using TSG101/VPS23 Rabbit polyclonal antibody (STJ11104735) at dilution of 1:100 (40x lens). Blue: DAPI for nuclear staining.



Immunofluorescence analysis of Jurkat cells using TSG101/VPS23 Rabbit polyclonal antibody (STJ11104735) at dilution of 1:100 (40x lens). Blue: DAPI for nuclear staining.



Western blot analysis of extracts from normal (control) and TSG101/VPS23 knockdown (KD) SH-SY5Y (KD) cells, using TSG101/VPS23 Rabbit polyclonal antibody (STJ11104735) at 1:800 dilution. Secondary antibody: HRP Goat Anti-Rabbit IgG (H+L) (STJS000856) at 1:10000 dilution. Lysates/proteins: 25ug per lane. Blocking buffer: 3% nonfat dry milk in TBST. Detection: ECL Basic Kit. Exposure time: 30s.



Western blot analysis of K-562, using TSG101/VPS23 Rabbit polyclonal antibody (STJ11104735) at 1:800 dilution. Secondary antibody: HRP Goat Anti-Rabbit IgG (H+L) (STJS000856) at 1:10000 dilution. Lysates/proteins: 25ug per lane. Blocking buffer: 3% nonfat dry milk in TBST. Detection: ECL Basic Kit. Exposure time: 30s.

This product is suitable for in-vitro studies under the RESEARCH USE ONLY [RUO] licence. This product must not be used as for diagnostic or other medical purposes.
St John's Laboratory Ltd, Knowledge Dock Business Centre, University Way, London, E16 2RD | Tel: 0208 223 3081