

Anti-P4HA2 antibody (157-333) [S4733RM] (STJ11104733)

STJ11104733

GENERAL INFORMATION

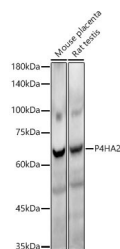
Product Type	Primary antibodies
Short Description	
Applications	WB/ELISA
Host/Source	Rabbit
Reactivity	Human/Mouse/Rat

PRODUCT PROPERTIES

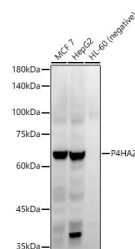
Clonality	Monoclonal
Clone ID	S4733RM
Concentration	Lot specific
Conjugation	Unconjugated
Purification	Affinity purification
Dilution	WB:1:2000-1:20000
Range	ELISA:Recommended starting concentration is 1 Mu g/mL. Please optimize the concentration based on your specific assay requirements.
Formulation	PBS with 0.05% Proclin300, 0.05% BSA, 50% Glycerol, pH 7.3.
Isotype	IgG
Storage	Store at-20°C for up to 1 year from the date of receipt, and avoid repeat freeze-thaw cycles.
Instruction	

TARGET INFORMATION

Gene ID	8974
Gene Symbol	P4HA2
Uniprot ID	P4HA2_HUMAN
Immunogen	
Immunogen Region	157-333
Specificity	Recombinant fusion protein containing a sequence corresponding to amino acids 157-333 of human P4HA2 (NP_004190.1). GTKYQAMLSVDDCFGMGGRSA YNEGDIYYHTVLWMEQVLKQL DAGEEATTTKSQVLDYLSYA VFQLGDLHRALELTRLLSL DPSHERAGGNLRYFEQLLEE EREKLTNTQTEAELATPEGI YERPVDYLPERDVYESLCRG EGVKLTPRRQKRLFCRYHHG NRAPQLLIAPFKEEWEW
Immunogen Sequence	



Western blot analysis of various lysates, using P4HA2 antibody (STJ11104733) at 1:20000 dilution. Secondary antibody: HRP Goat Anti-Rabbit IgG (H+L) (STJS000856) at 1:10000 dilution. Lysates/proteins: 25 Mu g per lane. Blocking buffer: 3% nonfat dry milk in TBST. Detection: ECL Enhanced Kit. Exposure time: 180s.



Western blot analysis of various lysates, using P4HA2 antibody (STJ11104733) at 1:20000 dilution. Secondary antibody: HRP Goat Anti-Rabbit IgG (H+L) (STJS000856) at 1:10000 dilution. Lysates/proteins: 25 Mu g per lane. Blocking buffer: 3% nonfat dry milk in TBST. Detection: ECL Enhanced Kit. Exposure time: 60s.

This product is suitable for in-vitro studies under the RESEARCH USE ONLY [RUO] licence. This product must not be used as for diagnostic or other medical purposes.
St John's Laboratory Ltd, Knowledge Dock Business Centre, University Way, London, E16 2RD | Tel: 0208 223 3081