

Anti-CSF2 antibody (18-144) (STJ11104714)

STJ11104714

GENERAL INFORMATION

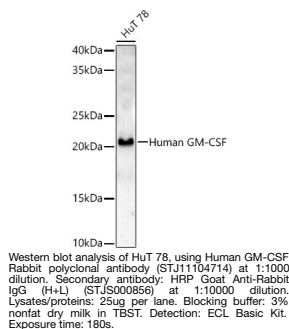
Product Type	Primary antibodies
Short Description	
Applications	WB/ELISA
Host/Source	Rabbit
Reactivity	Human

PRODUCT PROPERTIES

Clonality	Polyclonal
Clone ID	
Concentration	Lot specific
Conjugation	Unconjugated
Purification	Affinity purification
Dilution Range	WB: 1:500-1:1000 ELISA: Recommended starting concentration is 1 µg/mL. Please optimize the concentration based on your specific assay requirements.
Formulation	PBS with 0.05% Proclin300, 50% Glycerol, pH 7.3.
Isotype	IgG
Storage Instruction	Store at -20°C for up to 1 year from the date of receipt, and avoid repeat freeze-thaw cycles.

TARGET INFORMATION

Gene ID	1437
Gene Symbol	CSF2
Uniprot ID	CSF2_HUMAN
Immunogen	
Immunogen Region	18-144
Specificity	Recombinant fusion protein containing a sequence corresponding to amino acids 18-144 of human Human GM-CSF (NP_000749.2).
Immunogen Sequence	APARSPSPSTQPWEHVNAIQ EARRLLNLSRDTAAEMNETV EVISEMFDLQEPTCLQTRLE LYKQGLRGSLTKLKGPLTMM ASHYKQHCPTPETSCATQI ITFESFKENLKDILLVIPFD CWEPVQE



This product is suitable for in-vitro studies under the RESEARCH USE ONLY [RUO] licence. This product must not be used as for diagnostic or other medical purposes.
St John's Laboratory Ltd, Knowledge Dock Business Centre, University Way, London, E16 2RD | Tel: 0208 223 3081