

Anti-AIF1 antibody (1-147) [S4712RM] (STJ11104712)

STJ11104712

GENERAL INFORMATION

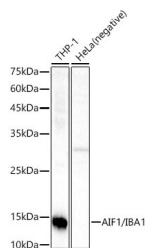
Product Type	Primary antibodies
Short Description	
Applications	WB/ELISA
Host/Source	Rabbit
Reactivity	Human/Rat

PRODUCT PROPERTIES

Clonality	Monoclonal
Clone ID	S4712RM
Concentration	Lot specific
Conjugation	Unconjugated
Purification	Affinity purification
Dilution	WB: 1:500-1:1000
Range	ELISA: Recommended starting concentration is 1 µg/mL. Please optimize the concentration based on your specific assay requirements.
Formulation	PBS with 0.05% Proclin300, 0.05% BSA, 50% Glycerol, pH 7.3.
Isotype	IgG
Storage	Store at -20°C for up to 1 year from the date of receipt, and avoid repeat freeze-thaw cycles.
Instruction	

TARGET INFORMATION

Gene ID	199
Gene Symbol	AIF1
Uniprot ID	AIF1_HUMAN
Immunogen	
Immunogen Region	1-147
Specificity	Recombinant fusion protein containing a sequence corresponding to amino acids 1-147 of human AIF1/IBA1 (NP_001614.3). MSQTRDLQGGKAFGLLKAQQ EERLDEINKQFLDDPKYSSD EDLPSKLEGFKYMEFDLN GNGDIDIMSLKRMLEKLGVP
Immunogen Sequence	KTHLELKKLIGEVSSGSGET FSYPDFLRMMLGKRSAILKM ILMYEEKAREKEKPTGPPAK KAISELP



Western blot analysis of extracts of various cell lines, using AIF1/IBA1 antibody (STJ11104712) at 1:900 dilution. Secondary antibody: HRP Goat Anti-Rabbit IgG (H+L) (STJS000856) at 1:10000 dilution. Lysates/proteins: 25 µg per lane. Blocking buffer: 3% nonfat dry milk in TBST. Detection: ECL Basic Kit. Exposure time: 10s.

This product is suitable for in-vitro studies under the RESEARCH USE ONLY [RUO] licence. This product must not be used as for diagnostic or other medical purposes.
St John's Laboratory Ltd, Knowledge Dock Business Centre, University Way, London, E16 2RD | Tel: 0208 223 3081