

Anti-CCL17 antibody (450-550) (STJ11104710)

STJ11104710

GENERAL INFORMATION

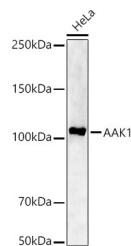
Product Type	Primary antibodies
Short Description	
Applications	WB/ELISA
Host/Source	Rabbit
Reactivity	Human

PRODUCT PROPERTIES

Clonality	Polyclonal
Clone ID	
Concentration	Lot specific
Conjugation	Unconjugated
Purification	Affinity purification
Dilution Range	WB:1:500-1:1000 ELISA:Recommended starting concentration is 1 Mu g/mL. Please optimize the concentration based on your specific assay requirements.
Formulation	PBS with 0.05% Proclin300, 50% Glycerol, pH 7.3.
Isotype	IgG
Storage	Store at -20°C for up to 1 year from the date of receipt, and avoid repeat freeze-thaw cycles.
Instruction	

TARGET INFORMATION

Gene ID	6361
Gene Symbol	CCL17
Uniprot ID	CCL17_HUMAN
Immunogen	
Immunogen Region	450-550
Specificity	A synthetic peptide corresponding to a sequence within amino acids 450-550 of human AAK1 (NP_055726.4).
Immunogen Sequence	AQGLPAQAQATPQHQQQLFL KQQQQQQQPPPAQQQPAGTF YQQQQAQTQQFQAVHPATQK PAIAQFPVVSQGGSQQLMQ NFIYQQQQQQQQQQQQQLAT A



Western blot analysis of HeLa, using AAK1 Rabbit polyclonal antibody (STJ11104710) at 1:1000 dilution. Secondary antibody: HRP Goat Anti-Rabbit IgG (H+L) (STJS000856) at 1:10000 dilution. Lysates/proteins: 25ug per lane. Blocking buffer: 3% nonfat dry milk in TBST. Detection: ECL Enhanced Kit. Exposure time: 90s.

This product is suitable for in-vitro studies under the RESEARCH USE ONLY [RUO] licence. This product must not be used as for diagnostic or other medical purposes.
St John's Laboratory Ltd, Knowledge Dock Business Centre, University Way, London, E16 2RD | Tel: 0208 223 3081