

Anti-PPM1A antibody (1-382) [S4695RM] (STJ11104695)
STJ11104695

GENERAL INFORMATION

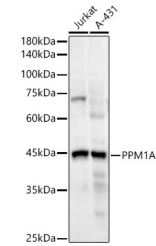
Product Type	Primary antibodies
Short Description	
Applications	WB/ELISA
Host/Source	Rabbit
Reactivity	Human

PRODUCT PROPERTIES

Clonality	Monoclonal
Clone ID	S4695RM
Concentration	Lot specific
Conjugation	Unconjugated
Purification	Affinity purification
Dilution	WB:1:2000-1:20000
Range	ELISA:Recommended starting concentration is 1 µg/mL. Please optimize the concentration based on your specific assay requirements.
Formulation	PBS with 0.05% Proclin300, 0.05% BSA, 50% Glycerol, pH 7.3.
Isotype	IgG
Storage Instruction	Store at -20°C for up to 1 year from the date of receipt, and avoid repeat freeze-thaw cycles.

TARGET INFORMATION

Gene ID	5494
Gene Symbol	PPM1A
Uniprot ID	PPM1A_HUMAN
Immunogen	
Immunogen Region	1-382
Specificity	Recombinant fusion protein containing a sequence corresponding to amino acids 1-382 of human PPM1A (NP_066283.1).
Immunogen Sequence	MGAFLDKPKMEKHNAQGQGN GLRYGLSSMQGWRVEMEDAH TAVIGLPSGLESWSFFAVYD GHAGSQVAKYCCHELLDHIT NNQDFKGSAGAPSVENVKNG IRTGFLEIDEHMRVMSEKKH GADRS GSTAVGLISPQHTY FINCGDSRGLLCRNKRVHFF TQDHKPSNPLEKERIQNAGG SVMIQRVNGSLAVSRALGDF DYKCVHGKGPTQLVSPEPE VHDIERSEEDDQFIILACD



Western blot analysis of extracts of various cell lines, using PPM1A antibody (STJ11104695) at 1:20000 dilution. Secondary antibody: HRP Goat Anti-Rabbit IgG (H+L) (STJS000856) at 1:10000 dilution. Lysates/proteins: 25 µg per lane. Blocking buffer: 3% nonfat dry milk in TBST. Detection: ECL Enhanced Kit. Exposure time: 90s.

This product is suitable for in-vitro studies under the RESEARCH USE ONLY [RUO] licence. This product must not be used as for diagnostic or other medical purposes.
St John's Laboratory Ltd, Knowledge Dock Business Centre, University Way, London, E16 2RD | Tel: 0208 223 3081