

Anti-CHEK1 antibody (250-350) [S4686RM] (STJ11104686)

STJ11104686

GENERAL INFORMATION

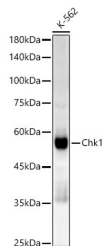
Product Type	Primary antibodies
Short Description	
Applications	WB/ELISA
Host/Source	Rabbit
Reactivity	Human

PRODUCT PROPERTIES

Clonality	Monoclonal
Clone ID	S4686RM
Concentration	Lot specific
Conjugation	Unconjugated
Purification	Affinity purification
Dilution Range	WB:1:2000-1:20000 ELISA:Recommended starting concentration is 1 Mu g/mL. Please optimize the concentration based on your specific assay requirements.
Formulation	PBS with 0.05% Proclin300, 0.05% BSA, 50% Glycerol, pH 7.3.
Isotype	IgG
Storage	Store at -20°C for up to 1 year from the date of receipt, and avoid repeat freeze-thaw cycles.
Instruction	

TARGET INFORMATION

Gene ID	1111
Gene Symbol	CHEK1
Uniprot ID	CHK1_HUMAN
Immunogen	
Immunogen	250-350
Region	
Specificity	A synthetic peptide corresponding to a sequence within amino acids 250-350 of human Chk1 (NP_001107593.1).
Immunogen	PSARITIPDIKKDRWYNKPL KKGAKRPRVTSGGVSESPSG FSKHIQSNLDFSPVNSASSE ENVKYSSSQPEPRTGLSLWD
Sequence	TSPSYIDKLQQGISFSQPTC P



Western blot analysis of extracts of K-562 cells, using Chk1 antibody (STJ11104686) at 1:10000 dilution. Secondary antibody: HRP Goat Anti-Rabbit IgG (H+L) (STJ5000856) at 1:10000 dilution. Lysates/proteins: 25 Mu g per lane. Blocking buffer: 3% nonfat dry milk in TBST. Detection: ECL Enhanced Kit. Exposure time: 60s.

This product is suitable for in-vitro studies under the RESEARCH USE ONLY [RUO] licence. This product must not be used as for diagnostic or other medical purposes.
St John's Laboratory Ltd, Knowledge Dock Business Centre, University Way, London, E16 2RD | Tel: 0208 223 3081