

Anti-NR1D2 antibody (220-300) [S4683RM] (STJ11104683)

STJ11104683

GENERAL INFORMATION

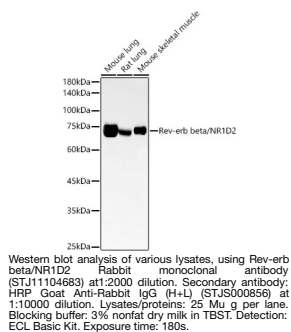
Product Type	Primary antibodies
Short Description	
Applications	WB/ELISA
Host/Source	Rabbit
Reactivity	Mouse/Rat

PRODUCT PROPERTIES

Clonality	Monoclonal
Clone ID	S4683RM
Concentration	Lot specific
Conjugation	Unconjugated
Purification	Affinity purification
Dilution Range	WB:1:1000-1:5000 ELISA:Recommended starting concentration is 1 µg/mL. Please optimize the concentration based on your specific assay requirements.
Formulation	PBS with 0.05% Proclin300, 0.05% BSA, 50% Glycerol, pH 7.3.
Isotype	IgG
Storage Instruction	Store at -20°C for up to 1 year from the date of receipt, and avoid repeat freeze-thaw cycles.

TARGET INFORMATION

Gene ID	9975
Gene Symbol	NR1D2
Uniprot ID	NR1D2_HUMAN
Immunogen	
Immunogen Region	220-300
Specificity	Recombinant fusion protein containing a sequence corresponding to amino acids 220-300 of human Rev-erb beta/NR1D2 (NP_005117.3).
Immunogen Sequence	ALPAQEQLRPKPLEQENIK SSSPPSSDFAKEEVIGMVTR AHKDTFMYNQEQQENSAESM QPQRGERIPKNMEQYNLNHD H



This product is suitable for in-vitro studies under the RESEARCH USE ONLY [RUO] licence. This product must not be used as for diagnostic or other medical purposes.
St John's Laboratory Ltd, Knowledge Dock Business Centre, University Way, London, E16 2RD | Tel: 0208 223 3081