

Anti-HSPA4 antibody (680-840) (STJ11104666)
STJ11104666

GENERAL INFORMATION

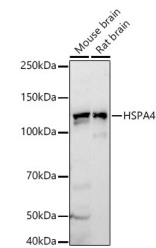
Product Type	Primary antibodies
Short Description	
Applications	WB/ELISA
Host/Source	Rabbit
Reactivity	Human/Mouse/Rat

PRODUCT PROPERTIES

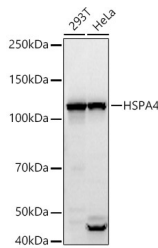
Clonality	Polyclonal
Clone ID	
Concentration	Lot specific
Conjugation	Unconjugated
Purification	Affinity purification
Dilution	WB:1:500-1:1000
Range	ELISA:Recommended starting concentration is 1 Mu g/mL. Please optimize the concentration based on your specific assay requirements.
Formulation	PBS with 0.05% Proclin300, 50% Glycerol, pH 7.3.
Isotype	IgG
Storage	Store at-20°C for up to 1 year from the date of receipt, and avoid repeat freeze-thaw cycles.
Instruction	

TARGET INFORMATION

Gene ID	3308
Gene Symbol	HSPA4
Uniprot ID	HSP74_HUMAN
Immunogen	
Immunogen Region	680-840
Specificity	Recombinant fusion protein containing a sequence corresponding to amino acids 680-840 of human HSPA4 (NP_002145.3). NLGQPIKIRFQSEERPKLF EELGKIQQYMKIISFKNK EDQYDHLDAADMTKVEKSTN EAMEWMNNKLNQNKQSLTM
Immunogen Sequence	DPVVKSEIEAKIKELTSTC SPIISKPKPKVEPPKEEQKN AEQNGPVDGQGDNPGPQAAE QGTDTAVPDSDKKLPAMD D



Western blot analysis of extracts of various cell lines, using HSPA4 antibody (STJ11104666) at 1:800 dilution. Secondary antibody: HRP Goat Anti-Rabbit IgG (H+L) (STJ5000856) at 1:10000 dilution. Lysates/proteins: 25 Mu g per lane. Blocking buffer: 3% nonfat dry milk in TBST. Detection: ECL Basic Kit. Exposure time: 30s.



Western blot analysis of extracts of various cell lines, using HSPA4 antibody (STJ11104666) at 1:800 dilution. Secondary antibody: HRP Goat Anti-Rabbit IgG (H+L) (STJ5000856) at 1:10000 dilution. Lysates/proteins: 25 Mu g per lane. Blocking buffer: 3% nonfat dry milk in TBST. Detection: ECL Basic Kit. Exposure time: 10s.

This product is suitable for in-vitro studies under the RESEARCH USE ONLY [RUO] licence. This product must not be used as for diagnostic or other medical purposes.
St John's Laboratory Ltd, Knowledge Dock Business Centre, University Way, London, E16 2RD | Tel: 0208 223 3081