

Anti-AGTR2 antibody (150-250) (STJ11104644)

STJ11104644

GENERAL INFORMATION

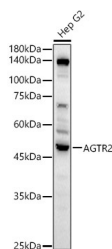
Product Type	Primary antibodies
Short Description	
Applications	WB/ELISA
Host/Source	Rabbit
Reactivity	Human

PRODUCT PROPERTIES

Clonality	Polyclonal
Clone ID	
Concentration	Lot specific
Conjugation	Unconjugated
Purification	Affinity purification
Dilution Range	WB:1:500-1:1000 ELISA:Recommended starting concentration is 1 µg/mL. Please optimize the concentration based on your specific assay requirements.
Formulation	PBS with 0.05% Proclin300, 50% Glycerol, pH 7.3.
Isotype	IgG
Storage Instruction	Store at -20°C for up to 1 year from the date of receipt, and avoid repeat freeze-thaw cycles.

TARGET INFORMATION

Gene ID	186
Gene Symbol	AGTR2
Uniprot ID	AGTR2_HUMAN
Immunogen	
Immunogen Region	150-250
Specificity	A synthetic peptide corresponding to a sequence within amino acids 150-250 of human AGTR2 (NP_000677.2).
Immunogen Sequence	FLSQRRNPWQASYIVPLVWC MACLSSLPTFYFRDVRTIEY LGVNACIMAFPEPEKYAQWSA GIALMKNILGFIPLFIAT CYFGIRKHLLKTNSYGKNRI T



Western blot analysis of lysates from Hep G2, using AGTR2 Rabbit polyclonal antibody (STJ11104644) at 1:1000 dilution. Secondary antibody: HRP Goat Anti-Rabbit IgG (H+L) (STJS000856) at 1:10000 dilution. Lysates/proteins: 25µg per lane. Blocking buffer: 3% nonfat dry milk in TBST. Detection: ECL Basic Kit. Exposure time: 10s.

This product is suitable for in-vitro studies under the RESEARCH USE ONLY [RUO] licence. This product must not be used as for diagnostic or other medical purposes.
St John's Laboratory Ltd, Knowledge Dock Business Centre, University Way, London, E16 2RD | Tel: 0208 223 3081