

**Anti-FOSL1 antibody (1-100) (STJ11104635)**  
STJ11104635

**GENERAL INFORMATION**

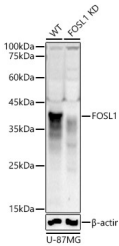
|                          |                    |
|--------------------------|--------------------|
| <b>Product Type</b>      | Primary antibodies |
| <b>Short Description</b> |                    |
| <b>Applications</b>      | WB/ELISA           |
| <b>Host/Source</b>       | Rabbit             |
| <b>Reactivity</b>        | Human              |

**PRODUCT PROPERTIES**

|                       |  |
|-----------------------|--|
| <b>Clonality</b>      | Polyclonal   |
| <b>Clone ID</b>       |  |
| <b>Concentration</b>  | Lot specific   |
| <b>Conjugation</b>    | Unconjugated   |
| <b>Purification</b>   | Affinity purification  |
| <b>Dilution Range</b> | WB:1:500-1:1000<br>ELISA:Recommended starting concentration is 1 Mu g/mL. Please optimize the concentration based on your specific assay requirements. |
| <b>Formulation</b>    | PBS with 0.05% Proclin300, 50% Glycerol, pH 7.3.   |
| <b>Isotype</b>        | IgG  |
| <b>Storage</b>        | Store at -20°C for up to 1 year from the date of receipt, and avoid repeat freeze-thaw cycles.   |
| <b>Instruction</b>    |  |

**TARGET INFORMATION**

|                           |  |
|---------------------------|--|
| <b>Gene ID</b>            | 8061   |
| <b>Gene Symbol</b>        | FOSL1  |
| <b>Uniprot ID</b>         | FOSL1_HUMAN  |
| <b>Immunogen</b>          |  |
| <b>Immunogen Region</b>   | 1-100  |
| <b>Specificity</b>        | Recombinant fusion protein containing a sequence corresponding to amino acids 1-100 of human FOSL1 (NP_005429.1?). |
| <b>Immunogen Sequence</b> | MFRDFGEPGPSSGNGGGYGG PAQPPAAQAQKQKHLVPS INTMSGSQELQWMVQPHFLG PSSYPRPLTYPQYSPPQPRP<br>GVIRALGPPPGVRRRPCEQI          |



Western blot analysis of extracts from wild type (WT) and FOSL1 knockdown (KD) U-87MG cells, using FOSL1 antibody (STJ11104635) at 1:1000 dilution. Secondary antibody: HRP Goat Anti-Rabbit IgG (H+L) (STJS000856) at 1:10000 dilution. Lysates/proteins: 25 Mu g per lane. Blocking buffer: 3% nonfat dry milk in TBST. Detection: ECL Basic Kit. Exposure time: 5s.

This product is suitable for in-vitro studies under the RESEARCH USE ONLY [RUO] licence. This product must not be used as for diagnostic or other medical purposes.  
St John's Laboratory Ltd, Knowledge Dock Business Centre, University Way, London, E16 2RD | Tel: 0208 223 3081