

Anti-SOCS3 antibody (126-225) [S4631RM] (STJ11104631)

STJ11104631

GENERAL INFORMATION

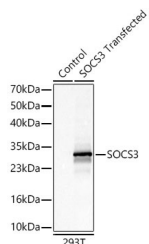
Product Type	Primary antibodies
Short Description	
Applications	WB/ELISA
Host/Source	Rabbit
Reactivity	Human/Mouse

PRODUCT PROPERTIES

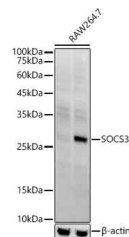
Clonality	Monoclonal
Clone ID	S4631RM
Concentration	Lot specific
Conjugation	Unconjugated
Purification	Affinity purification
Dilution Range	WB:1:1000-1:5000 ELISA:Recommended starting concentration is 1 Mu g/mL. Please optimize the concentration based on your specific assay requirements.
Formulation	PBS with 0.05% Proclin300, 0.05% BSA, 50% Glycerol, pH 7.3.
Isotype	IgG
Storage Instruction	Store at -20°C for up to 1 year from the date of receipt, and avoid repeat freeze-thaw cycles.

TARGET INFORMATION

Gene ID	9021
Gene Symbol	SOCS3
Uniprot ID	SOCS3_HUMAN
Immunogen	
Immunogen	126-225
Region	
Specificity	A synthetic peptide corresponding to a sequence within amino acids 126-225 of human SOCS3 (NP_003946.3).
Immunogen	HYMPPPGAPSFPSPTPEPSS EVPEQPSAQPLPGSPPRRAY YIYSGGEKIPLVLSRPLSSN VATLQHLCKRTVNGHLDSEY
Sequence	KVTQLPGPIREFLDQYDAPL



Western blot analysis of 293T-SOCS3-Flag, using SOCS3 Rabbit monoclonal antibody (STJ11104631) at 1:1000 dilution. Secondary antibody: HRP Goat Anti-Rabbit IgG (H+L) (STJS000856) at 1:10000 dilution. Lysates/proteins: 25ug per lane. Blocking buffer: 3% nonfat dry milk in TBST. Detection: ECL Basic Kit. Exposure time: 1s.



Western blot analysis of extracts of various cell lines, using SOCS3 antibody (STJ11104631) at 1:2000 dilution. RAW264, 7 cells were treated by LPS (1 Mu g/ml) at 37 °C for 8 hours. Secondary antibody: HRP Goat Anti-Rabbit IgG (H+L) (STJS000856) at 1:10000 dilution. Lysates/proteins: 25 Mu g per lane. Blocking buffer: 3% nonfat dry milk in TBST. Detection: ECL Enhanced Kit. Exposure time: 180s.

This product is suitable for in-vitro studies under the RESEARCH USE ONLY [RUO] licence. This product must not be used as for diagnostic or other medical purposes.
St John's Laboratory Ltd, Knowledge Dock Business Centre, University Way, London, E16 2RD | Tel: 0208 223 3081