

Anti-HCAR2 antibody (100-200) [S4625RM] (STJ11104625)

STJ11104625

GENERAL INFORMATION

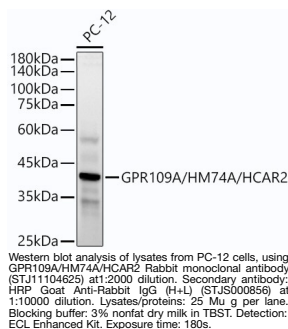
Product Type	Primary antibodies
Short Description	
Applications	WB/ELISA
Host/Source	Rabbit
Reactivity	Mouse/Rat

PRODUCT PROPERTIES

Clonality	Monoclonal
Clone ID	S4625RM
Concentration	Lot specific
Conjugation	Unconjugated
Purification	Affinity purification
Dilution Range	WB:1:1000-1:5000 ELISA:Recommended starting concentration is 1 Mu g/mL. Please optimize the concentration based on your specific assay requirements.
Formulation	PBS with 0.05% Proclin300, 0.05% BSA, 50% Glycerol, pH 7.3.
Isotype	IgG
Storage Instruction	Store at -20°C for up to 1 year from the date of receipt, and avoid repeat freeze-thaw cycles.

TARGET INFORMATION

Gene ID	338442
Gene Symbol	HCAR2
Uniprot ID	HCAR2_HUMAN
Immunogen	
Immunogen	100-200
Region	
Specificity	A synthetic peptide corresponding to a sequence within amino acids 100-200 of human GPR109A/HM74A/HCAR2 (NP_808219.1).
Immunogen	CRLMLFMLAMNRQGSIIFLT VVAVDRYFRVPHPHALNKI SNRTAAIISCLLWGITIGLT VHLLKKKMPIONGGANLCSS
Sequence	FSICHTFQWHEAMFLEFFL P



This product is suitable for in-vitro studies under the RESEARCH USE ONLY [RUO] licence. This product must not be used as for diagnostic or other medical purposes.
St John's Laboratory Ltd, Knowledge Dock Business Centre, University Way, London, E16 2RD | Tel: 0208 223 3081