

**Anti-S100A11 antibody (1-105) (STJ11104605)**  
STJ11104605

**GENERAL INFORMATION**

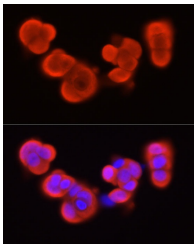
<b>Product Type</b>	Primary antibodies
<b>Short Description</b>	
<b>Applications</b>	WB/IF/ICC/ELISA
<b>Host/Source</b>	Rabbit
<b>Reactivity</b>	Human

**PRODUCT PROPERTIES**

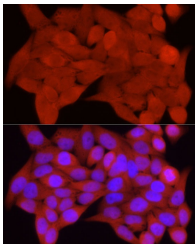
<b>Clonality</b>	Polyclonal
<b>Clone ID</b>	
<b>Concentration</b>	Lot specific
<b>Conjugation</b>	Unconjugated
<b>Purification</b>	Affinity purification
<b>Dilution Range</b>	WB:1:500-1:1000 IF/ICC:1:50-1:200 ELISA:Recommended starting concentration is 1 Mu g/mL. Please optimize the concentration based on your specific assay requirements.
<b>Formulation</b>	PBS with 0.05% Proclin300, 50% Glycerol, pH 7.3.
<b>Isotype</b>	IgG
<b>Storage</b>	Store at -20°C for up to 1 year from the date of receipt, and avoid repeat freeze-thaw cycles.
<b>Instruction</b>	

**TARGET INFORMATION**

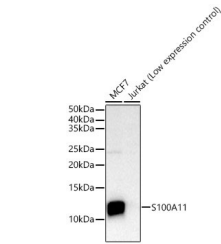
<b>Gene ID</b>	6282
<b>Gene Symbol</b>	S100A11
<b>Uniprot ID</b>	S10AB_HUMAN
<b>Immunogen</b>	
<b>Immunogen Region</b>	1-105
<b>Specificity</b>	Recombinant fusion protein containing a sequence corresponding to amino acids 1-105 of human S100A11 (NP_005611.1). MAKISSPTETERCIESLIIV FQKYAGKDGYNITLSKTEFL SFMNTELAAFTKNQKDPGVL DRMMKKLDTNSDGGQLDFSEF
<b>Immunogen Sequence</b>	LNLIIGLAMACHDSFLKAVP SQKRT



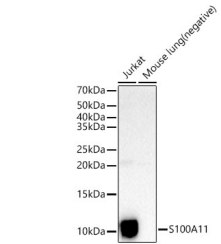
Immunofluorescence analysis of MCF7 cells using S100A11 Rabbit polyclonal antibody (STJ11104605) at dilution of 1:50 (40x lens). Secondary antibody: Cy3 Goat Anti-Rabbit IgG (H+L) at 1:500 dilution. Blue: DAPI for nuclear staining.



Immunofluorescence analysis of HeLa cells using S100A11 Rabbit polyclonal antibody (STJ11104605) at dilution of 1:50 (40x lens). Secondary antibody: Cy3 Goat Anti-Rabbit IgG (H+L) at 1:500 dilution. Blue: DAPI for nuclear staining.



Western blot analysis of lysates from MCF7 cells using S100A11 Rabbit polyclonal antibody (STJ11104605) at 1:500 dilution. Secondary antibody:HRP Goat Anti-Rabbit IgG (H+L) (STJS000856) at 1:10000 dilution. Lysates/proteins: 25A Mu g per lane. Blocking buffer: 3% nonfat dry milk in TBST. Detection:ECL Basic Kit. Exposurertime:10s.



Western blot analysis of various lysates using S100A11 Rabbit polyclonal antibody (STJ11104605) at 1:400 dilution. Secondary antibody: HRP Goat Anti-Rabbit IgG (H+L) (STJS000856) at 1:10000 dilution. Lysates/proteins: 25 Mu g per lane. Blocking buffer: 3% nonfat dry milk in TBST. Detection: ECL Basic Kit. Exposure time: 1s.

This product is suitable for in-vitro studies under the RESEARCH USE ONLY [RUO] licence. This product must not be used as for diagnostic or other medical purposes.  
St John's Laboratory Ltd, Knowledge Dock Business Centre, University Way, London, E16 2RD | Tel: 0208 223 3081