

Anti-SOD2 antibody (25-222) (STJ11104554)

STJ11104554

GENERAL INFORMATION

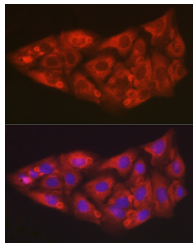
| | |
|--------------------------|-----------------------|
| Product Type | Primary antibodies |
| Short Description | |
| Applications | WB/IHC-P/IF/ICC/ELISA |
| Host/Source | Rabbit |
| Reactivity | Human/Mouse/Rat |

PRODUCT PROPERTIES

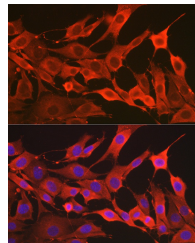
| | |
|-----------------------|--|
| Clonality | Polyclonal |
| Clone ID | |
| Concentration | Lot specific |
| Conjugation | Unconjugated |
| Purification | Affinity purification |
| Dilution Range | WB: 1:500-1:1000 IHC-P:1:50-1:200 IF/ICC:1:50-1:200 ELISA:Recommended starting concentration is 1 µg/mL. Please optimize the concentration based on your specific assay requirements. |
| Formulation | PBS with 0.05% Proclin300, 50% Glycerol, pH 7.3. |
| Isotype | IgG |
| Storage | Store at -20°C for up to 1 year from the date of receipt, and avoid repeat freeze-thaw cycles. |
| Instruction | |

TARGET INFORMATION

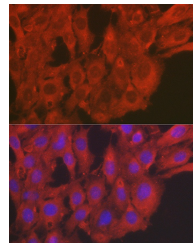
| | |
|---------------------------|---|
| Gene ID | 6648 |
| Gene Symbol | SOD2 |
| Uniprot ID | SODM_HUMAN |
| Immunogen | 25-222 |
| Region | |
| Specificity | Recombinant fusion protein containing a sequence corresponding to amino acids 25-222 of human SOD2 (NP_000627.2). |
| Immunogen Sequence | KHSLPDLPYDYGALPHINA QIMQLHHSKHHAAYVNNLN TEEKYQEALAKGDVTAQIAL QPALKFNGGGHINHSIFWTN LSPNGGGEPKGELLEAIKRD FGSFDKFKEKLTAASVGVGQ SGWGWLGFNKERGHLQIAAC PNQDPLQGTTGLIPLLGDV WEHAYYLQYKNVRPDYKAI WNVINWENVTERYMACKK |



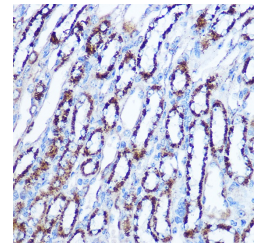
Immunofluorescence analysis of U2OS cells using SOD2 Rabbit polyclonal antibody (STJ11104554) at dilution of 1:50 (40x lens). Secondary antibody: Cy3 Goat Anti-Rabbit IgG (H+L) at 1:500 dilution. Blue: DAPI for nuclear staining.



Immunofluorescence analysis of NIH/3T3 cells using SOD2 Rabbit polyclonal antibody (STJ11104554) at dilution of 1:50 (40x lens). Secondary antibody: Cy3 Goat Anti-Rabbit IgG (H+L) at 1:500 dilution. Blue: DAPI for nuclear staining.



Immunofluorescence analysis of C6 cells using SOD2 Rabbit polyclonal antibody (STJ11104554) at dilution of 1:50 (40x lens). Secondary antibody: Cy3 Goat Anti-Rabbit IgG (H+L) at 1:500 dilution. Blue: DAPI for nuclear staining.



Immunohistochemistry analysis of SOD2 in paraffin-embedded mouse kidney using SOD2 Rabbit polyclonal antibody (STJ11104554) at dilution of 1:100 (40x lens). Perform microwave antigen retrieval with 10 mM Tris/EDTA buffer pH 9.0 before commencing with immunohistochemistry staining protocol.

This product is suitable for in-vitro studies under the RESEARCH USE ONLY [RUO] licence. This product must not be used as for diagnostic or other medical purposes.
St John's Laboratory Ltd, Knowledge Dock Business Centre, University Way, London, E16 2RD | Tel: 0208 223 3081