

## Anti-HSP90AB1 antibody (1-300) (STJ11104548)

STJ11104548

### GENERAL INFORMATION

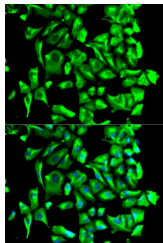
<b>Product Type</b>	Primary antibodies
<b>Short Description</b>	
<b>Applications</b>	WB/IHC-P/IF/ICC/ELISA
<b>Host/Source</b>	Rabbit
<b>Reactivity</b>	Human/Mouse/Rat

### PRODUCT PROPERTIES

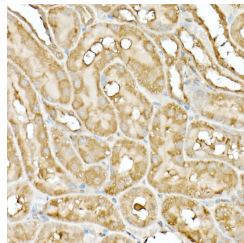
<b>Clonality</b>	Polyclonal
<b>Clone ID</b>	
<b>Concentration</b>	Lot specific
<b>Conjugation</b>	Unconjugated
<b>Purification</b>	Affinity purification
<b>Dilution</b>	WB:1:500-1:2000
<b>Range</b>	IHC-P:1:50-1:200 IF/ICC:1:50-1:200 ELISA:Recommended starting concentration is 1 µg/mL. Please optimize the concentration based on your specific assay requirements.
<b>Formulation</b>	PBS with 0.09% Sodium Azide, 50% Glycerol, pH 7.3.
<b>Isotype</b>	IgG
<b>Storage</b>	Store at -20°C for up to 1 year from the date of receipt, and avoid repeat freeze-thaw cycles.
<b>Instruction</b>	

### TARGET INFORMATION

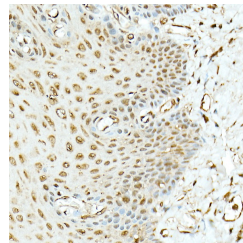
<b>Gene ID</b>	3326
<b>Gene Symbol</b>	HSP90AB1
<b>Uniprot ID</b>	HS90B_HUMAN
<b>Immunogen</b>	
<b>Immunogen Region</b>	1-300
<b>Specificity</b>	Recombinant fusion protein containing a sequence corresponding to amino acids 1-300 of human Hsp90 Beta (NP_031381.2).
<b>Immunogen Sequence</b>	MPEEVHHGEEVETFAFQAE IAQLMSLIINTFYSNKEIFL RELISNASDALDKIRYESLT DPSKLD SGKELKIDIIIPNPQ ERTLTLDVTGIGMTKADLIN NLGTIAKSGTKAFMEALQAG ADISMIGQFGVGFYSAYLVA EKVVITKHNDDEQYAWESS AGGSFTVRADHGEPIGRGTK VILHLKEDQTEYLEERRVKE VVKHSQFIGYPITLYLEKE REKEISDDEAEEEKGEKEE



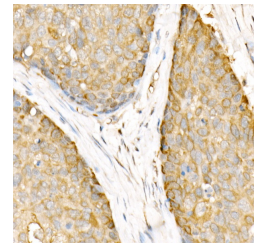
Immunofluorescence analysis of U2OS cells using Hsp90 Beta Rabbit polyclonal antibody (STJ11104548). Secondary antibody: Cy3 Goat Anti-Rabbit IgG (H+L) at 1:500 dilution. Blue: DAPI for nuclear staining.



Immunohistochemistry analysis of Hsp90 Beta in paraffin-embedded rat kidney using Hsp90 Beta Rabbit polyclonal antibody (STJ11104548) at dilution of 1:20 (40x lens). Perform high pressure antigen retrieval with 10 mM citrate buffer pH 6.0 before commencing with immunohistochemistry staining protocol.



Immunohistochemistry analysis of Hsp90 Beta in paraffin-embedded human esophagus using Hsp90 Beta Rabbit polyclonal antibody (STJ11104548) at dilution of 1:20 (40x lens). Perform high pressure antigen retrieval with 10 mM citrate buffer pH 6.0 before commencing with immunohistochemistry staining protocol.



Immunohistochemistry analysis of Hsp90 Beta in paraffin-embedded human esophageal cancer using Hsp90 Beta Rabbit polyclonal antibody (STJ11104548) at dilution of 1:20 (40x lens). Perform high pressure antigen retrieval with 10 mM citrate buffer pH 6.0 before commencing with immunohistochemistry staining protocol.