

Anti-ZEB1 antibody (800-900) [S4545RM] (STJ11104545)

STJ11104545

GENERAL INFORMATION

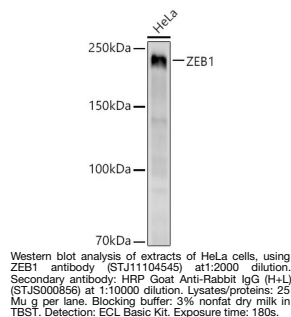
Product Type	Primary antibodies
Short Description	
Applications	WB/ELISA
Host/Source	Rabbit
Reactivity	Human/Mouse

PRODUCT PROPERTIES

Clonality	Monoclonal
Clone ID	S4545RM
Concentration	Lot specific
Conjugation	Unconjugated
Purification	Affinity purification
Dilution Range	WB:1:1000-1:5000 ELISA:Recommended starting concentration is 1 Mu g/mL. Please optimize the concentration based on your specific assay requirements.
Formulation	PBS with 0.05% Proclin300, 0.05% BSA, 50% Glycerol, pH 7.3.
Isotype	IgG
Storage Instruction	Store at -20°C for up to 1 year from the date of receipt, and avoid repeat freeze-thaw cycles.

TARGET INFORMATION

Gene ID	6935
Gene Symbol	ZEB1
Uniprot ID	ZEB1_HUMAN
Immunogen	
Immunogen	800-900
Region	
Specificity	A synthetic peptide corresponding to a sequence within amino acids 800-900 of human ZEB1 (NP_110378.3).
Immunogen	INIAIPTVTAQLPTIVAIAAD QNSVPCLRALAANKQTILIP QVAYTYSTTVSPAVQEPPLK VIQPNGNQDERQDTSSEGV
Sequence	NVEDQNDS DSTPPKKMKRKT E



This product is suitable for in-vitro studies under the RESEARCH USE ONLY [RUO] licence. This product must not be used as for diagnostic or other medical purposes.
St John's Laboratory Ltd, Knowledge Dock Business Centre, University Way, London, E16 2RD | Tel: 0208 223 3081