

Anti-CLDN1 antibody (111-211) (STJ11104534)

STJ11104534

GENERAL INFORMATION

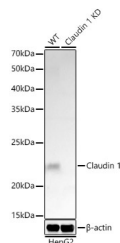
Product Type	Primary antibodies
Short Description	
Applications	WB/ELISA
Host/Source	Rabbit
Reactivity	Human

PRODUCT PROPERTIES

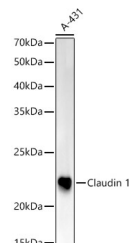
Clonality	Polyclonal
Clone ID	
Concentration	Lot specific
Conjugation	Unconjugated
Purification	Affinity purification
Dilution Range	WB:1:1000-1:5000 ELISA:Recommended starting concentration is 1 Mu g/mL. Please optimize the concentration based on your specific assay requirements.
Formulation	PBS with 0.05% Proclin300, 50% Glycerol, pH 7.3.
Isotype	IgG
Storage	Store at -20°C for up to 1 year from the date of receipt, and avoid repeat freeze-thaw cycles.
Instruction	

TARGET INFORMATION

Gene ID	9076
Gene Symbol	CLDN1
Uniprot ID	CLD1_HUMAN
Immunogen	
Immunogen Region	111-211
Specificity	Recombinant fusion protein containing a sequence corresponding to amino acids 111-211 of human Claudin 1 (NP_066924.1).
Immunogen Sequence	DEVQKMRMAVIGGAIFLLAG LAILVATAWYGNRIVQEFYD PMTPVNARYEFGQALFTGWA AASLCLLGALLCCSCPRKT TSYPTPRPYPKPAPSSGKDY V



Western blot analysis of lysates from wild type (WT) and Claudin 1 Rabbit polyclonal antibody knockout (KO) HepG2 (KO) cells, using Claudin 1 Rabbit polyclonal antibody (STJ11104534) at 1:500 dilution. Secondary antibody: HRP Goat Anti-Rabbit IgG (H+L) (STJUS000856) at 1:10000 dilution. Lysates/proteins: 25 Mu g per lane. Blocking buffer: 3% nonfat dry milk in TBST. Detection: ECL Basic Kit. Exposure time: 3s.



Western blot analysis of lysates from A-431 cells, using Claudin 1 Rabbit polyclonal antibody (STJ11104534) at 1:500 dilution. Secondary antibody: HRP Goat Anti-Rabbit IgG (H+L) (STJUS000856) at 1:10000 dilution. Lysates/proteins: 25 Mu g per lane. Blocking buffer: 3% nonfat dry milk in TBST. Detection: ECL Basic Kit. Exposure time: 3s.

This product is suitable for in-vitro studies under the RESEARCH USE ONLY [RUO] licence. This product must not be used as for diagnostic or other medical purposes.
St John's Laboratory Ltd, Knowledge Dock Business Centre, University Way, London, E16 2RD | Tel: 0208 223 3081