

Anti-AXIN2 antibody (700-800) (STJ11104474)

STJ11104474

GENERAL INFORMATION

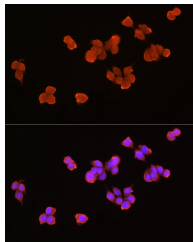
Product Type	Primary antibodies
Short Description	
Applications	IF/ICC/ELISA
Host/Source	Rabbit
Reactivity	Human

PRODUCT PROPERTIES

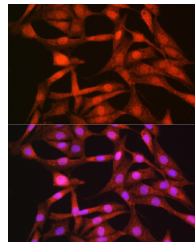
Clonality	Polyclonal
Clone ID	
Concentration	Lot specific
Conjugation	Unconjugated
Purification	Affinity purification
Dilution Range	IF/ICC:1:50-1:200 ELISA:Recommended starting concentration is 1 Mu g/mL. Please optimize the concentration based on your specific assay requirements.
Formulation	PBS with 0.01% Thimerosal, 50% Glycerol, pH 7.3.
Isotype	IgG
Storage Instruction	Store at -20°C for up to 1 year from the date of receipt, and avoid repeat freeze-thaw cycles.

TARGET INFORMATION

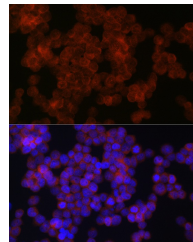
Gene ID	8313
Gene Symbol	AXIN2
Uniprot ID	AXIN2_HUMAN
Immunogen	
Immunogen Region	700-800
Specificity	A synthetic peptide corresponding to a sequence within amino acids 700-800 of human AXIN2 (NP_004646.3).
Immunogen Sequence	ACRRLAEVSKPPKQRCCVAS QQRDRNHSATVQTGATPFSN PSLAPEDHKEPKLAGVHAL QASELVVTYFFCGEEIPYRR MLKAQSLTLGHFKEQLSKKG N



Immunofluorescence analysis of SW620 cells using AXIN2 Rabbit polyclonal antibody (STJ11104474) at dilution of 1:100 (40x lens). Secondary antibody: Cy3 Goat Anti-Rabbit IgG (H+L) at 1:500 dilution. Blue: DAPI for nuclear staining.



Immunofluorescence analysis of NIH/3T3 cells using AXIN2 Rabbit polyclonal antibody (STJ11104474) at dilution of 1:100 (40x lens). Secondary antibody: Cy3 Goat Anti-Rabbit IgG (H+L) at 1:500 dilution. Blue: DAPI for nuclear staining.



Immunofluorescence analysis of 293T cells using AXIN2 Rabbit polyclonal antibody (STJ11104474) at dilution of 1:100 (40x lens). Secondary antibody: Cy3 Goat Anti-Rabbit IgG (H+L) at 1:500 dilution. Blue: DAPI for nuclear staining.

This product is suitable for in-vitro studies under the RESEARCH USE ONLY [RUO] licence. This product must not be used as for diagnostic or other medical purposes.
St John's Laboratory Ltd, Knowledge Dock Business Centre, University Way, London, E16 2RD | Tel: 0208 223 3081