

Anti-TFEB antibody (391-461) (STJ11104463)

STJ11104463

GENERAL INFORMATION

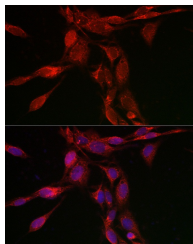
Product Type	Primary antibodies
Short Description	
Applications	WB/IHC-P/IF/ICC/ELISA
Host/Source	Rabbit
Reactivity	Human/Mouse/Rat

PRODUCT PROPERTIES

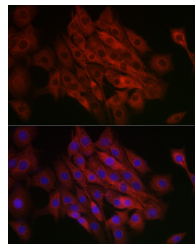
Clonality	Polyclonal
Clone ID	
Concentration	Lot specific
Conjugation	Unconjugated
Purification	Affinity purification
Dilution Range	WB:1:500-1:1000 IHC-P:1:50-1:200 IF/ICC:1:50-1:200 ELISA:Recommended starting concentration is 1 µg/mL. Please optimize the concentration based on your specific assay requirements.
Formulation	PBS with 0.05% Proclin300, 50% Glycerol, pH 7.3.
Isotype	IgG
Storage Instruction	Store at -20°C for up to 1 year from the date of receipt, and avoid repeat freeze-thaw cycles.

TARGET INFORMATION

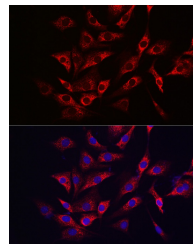
Gene ID	7942
Gene Symbol	TFEB
Uniprot ID	TFEB_HUMAN
Immunogen	
Immunogen Region	391-461
Specificity	Recombinant fusion protein containing a sequence corresponding to amino acids 391-461 of human TFEB (NP_009093.1).
Immunogen Sequence	FHHLDFSHSLSGGREDEGP PGYPEPLAPGHGSPFSLSK KDLDLMLLDDSLPLASDPL LSTMSPEASKA



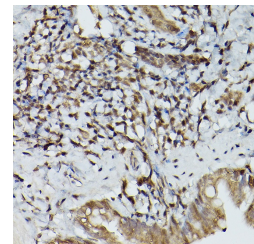
Immunofluorescence analysis of U2OS cells using TFEB Rabbit polyclonal antibody (STJ11104463) at dilution of 1:100 (40x lens). Blue: DAPI for nuclear staining.



Immunofluorescence analysis of PC-12 cells using TFEB Rabbit polyclonal antibody (STJ11104463) at dilution of 1:100 (40x lens). Blue: DAPI for nuclear staining.



Immunofluorescence analysis of NIH/3T3 cells using TFEB Rabbit polyclonal antibody (STJ11104463) at dilution of 1:100 (40x lens). Blue: DAPI for nuclear staining.



Immunohistochemistry analysis of paraffin-embedded rat lung using TFEB Rabbit polyclonal antibody (STJ11104463) at dilution of 1:100 (40x lens). Perform high pressure antigen retrieval with 10 mM citrate buffer pH 6.0 before commencing with immunohistochemistry staining protocol.