

Anti-STIM1 antibody (451-685) (STJ11104440)
STJ11104440

GENERAL INFORMATION

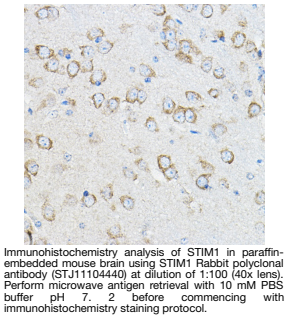
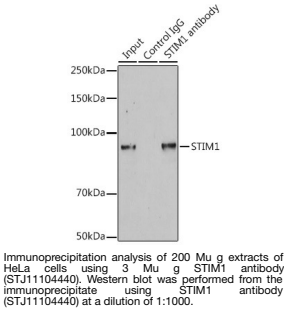
Product Type	Primary antibodies
Short Description	
Applications	WB/IHC-P/IP/ELISA
Host/Source	Rabbit
Reactivity	Human/Mouse/Rat

PRODUCT PROPERTIES

Clonality	Polyclonal
Clone ID	
Concentration	Lot specific
Conjugation	Unconjugated
Purification	Affinity purification
Dilution	WB:1:500-1:2000
Range	IHC-P:1:50-1:200 IP:0.5 Mu g-4 Mu g antibody for 200 Mu g-400 Mu g extracts of whole cells ELISA:Recommended starting concentration is 1 Mu g/mL. Please optimize the concentration based on your specific assay requirements.
Formulation	PBS with 0.01% Thimerosal, 50% Glycerol, pH 7.3.
Isotype	IgG
Storage	Store at-20°C for up to 1 year from the date of receipt, and avoid repeat freeze-thaw cycles.
Instruction	

TARGET INFORMATION

Gene ID	6786
Gene Symbol	STIM1
Uniprot ID	STIM1_HUMAN
Immunogen	
Immunogen Region	451-685
Specificity	Recombinant fusion protein containing a sequence corresponding to amino acids 451-685 of human STIM1 (NP_003147.2).
Immunogen Sequence	VAALNIDPSWMGSTRPNAH FIMTDDVDDMDEEIVSPLSM QSPSLQSSVRQRLTEPQHGL GSQRDLTHSDSESSLHMSDR QRVAPKPPQMSRAADEALNA MTSNGSHRLIEGVHPGSLVE KLPDSPALAKKALLALNHGL DKAHSLMELSPSAPPGGSPH LDSSRSHPSSPDPTPSPV GDSRALQASRNTRIPHLAKG KAVAEEDNGSIGEETDSSPG RKKFPLKIFKKPLKK



This product is suitable for in-vitro studies under the RESEARCH USE ONLY [RUO] licence. This product must not be used as for diagnostic or other medical purposes.
St John's Laboratory Ltd, Knowledge Dock Business Centre, University Way, London, E16 2RD | Tel: 0208 223 3081