

Anti-METTL3 antibody (1-156) (STJ11104420)

STJ11104420

GENERAL INFORMATION

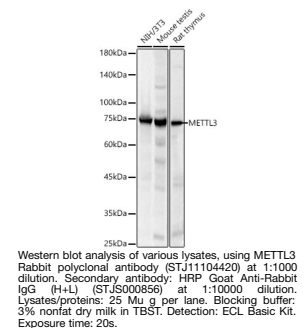
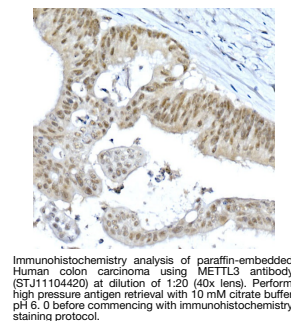
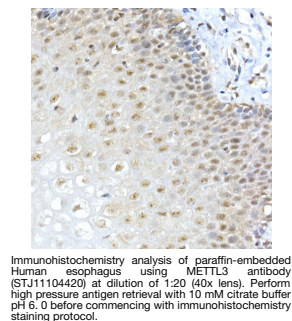
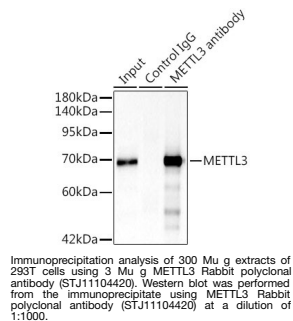
Product Type	Primary antibodies
Short Description	
Applications	WB/IHC-P/IP/ELISA
Host/Source	Rabbit
Reactivity	Human/Mouse/Rat

PRODUCT PROPERTIES

Clonality	Polyclonal
Clone ID	
Concentration	Lot specific
Conjugation	Unconjugated
Purification	Affinity purification
Dilution	WB: 1:500-1:1000
Range	IHC-P: 1:10-1:20 IHC-P: 1:500-1:1000 ELISA: Recommended starting concentration is 1 µg/mL. Please optimize the concentration based on your specific assay requirements.
Formulation	PBS with 0.05% Proclin300, 50% Glycerol, pH 7.3.
Isotype	IgG
Storage	Store at -20°C for up to 1 year from the date of receipt, and avoid repeat freeze-thaw cycles.
Instruction	

TARGET INFORMATION

Gene ID	56339
Gene Symbol	METTL3
Uniprot ID	MTA70_HUMAN
Immunogen	
Immunogen Region	1-156
Specificity	Recombinant fusion protein containing a sequence corresponding to amino acids 1-156 of human METTL3 (NP_062826.2).
Immunogen Sequence	MSDTWSSIAHKKQLDSLRE RLQRRRKQDSGHLDLRNPEA ALSPTFRSDSPVPTAPTSGG PKPSTASAVPELATDPELEK KLLHLSLDLALTPDAVSI CLAISTPDAPATQDGVESLL QKFAAQELIEVKRGLLQDDA HPTLVITYADHSKLSAM



This product is suitable for in-vitro studies under the RESEARCH USE ONLY [RUO] licence. This product must not be used as for diagnostic or other medical purposes.

St John's Laboratory Ltd, Knowledge Dock Business Centre, University Way, London, E16 2RD | Tel: 0208 223 3081