

Anti-EXOC2 antibody (1-220) (STJ11104417)
STJ11104417

GENERAL INFORMATION

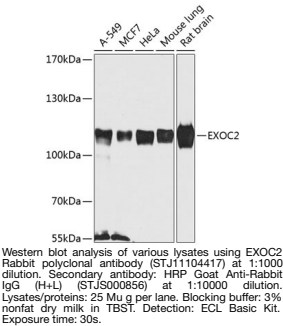
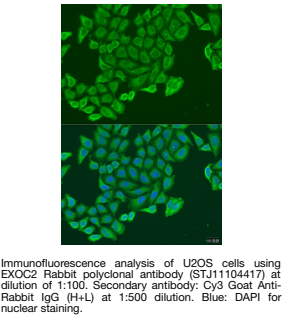
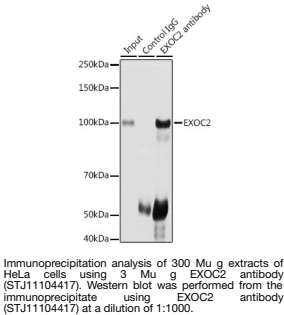
Product Type	Primary antibodies
Short Description	
Applications	WB/IF/ICC/IP/ELISA
Host/Source	Rabbit
Reactivity	Human/Mouse/Rat

PRODUCT PROPERTIES

Clonality	Polyclonal
Clone ID	
Concentration	Lot specific
Conjugation	Unconjugated
Purification	Affinity purification
Dilution	WB:1:500-1:2000
Range	IF/CC:1:50-1:200 IP:0.5 Mu g-4 Mu g antibody for 200 Mu g-400 Mu g extracts of whole cells ELISA:Recommended starting concentration is 1 Mu g/mL. Please optimize the concentration based on your specific assay requirements
Formulation	PBS with 0.02% Sodium Azide, 50% Glycerol, pH 7.3.
Isotype	IgG
Storage	Store at-20°C for up to 1 year from the date of receipt, and avoid repeat freeze-thaw cycles.
Instruction	

TARGET INFORMATION

Gene ID	55770
Gene Symbol	EXOC2
Uniprot ID	EXOC2_HUMAN
Immunogen	
Immunogen Region	1-220
Specificity	Recombinant fusion protein containing a sequence corresponding to amino acids 1-220 of human EXOC2 (NP_060773.3).
Immunogen Sequence	MSRSRQPPLVTGISPNEGIP WTKVTIRGENLGTGPTDLIG LTICGHNCLLTAEWMSASKI VCRVGQAKNDKGDIIVTTKS GGRGTSTVSFKLLKPEKIGI LDQSAVWVDEMNYDMRTDR NKGIPPLSLRPANPLGIEIE KSKFSQKDLEMLFHGMSADF TSFNFSAAWYLIENHSNTSF EQLKMAVTNLKRQANKKSEG SLAYVKGGLSTFFEAQDALS



This product is suitable for in-vitro studies under the RESEARCH USE ONLY [RUO] licence. This product must not be used as for diagnostic or other medical purposes.
St John's Laboratory Ltd, Knowledge Dock Business Centre, University Way, London, E16 2RD | Tel: 0208 223 3081