

## Anti-PRKAB1 antibody (18-82) (STJ11104416)

STJ11104416

### GENERAL INFORMATION

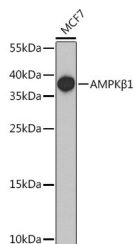
<b>Product Type</b>	Primary antibodies
<b>Short Description</b>	
<b>Applications</b>	WB/ELISA
<b>Host/Source</b>	Rabbit
<b>Reactivity</b>	Human

### PRODUCT PROPERTIES

<b>Clonality</b>	Polyclonal
<b>Clone ID</b>	
<b>Concentration</b>	Lot specific
<b>Conjugation</b>	Unconjugated
<b>Purification</b>	Affinity purification
<b>Dilution Range</b>	WB:1:500-1:2000 ELISA:Recommended starting concentration is 1 µg/mL. Please optimize the concentration based on your specific assay requirements.
<b>Formulation</b>	PBS with 0.02% Sodium Azide, 50% Glycerol, pH 7.3.
<b>Isotype</b>	IgG
<b>Storage Instruction</b>	Store at -20°C for up to 1 year from the date of receipt, and avoid repeat freeze-thaw cycles.

### TARGET INFORMATION

<b>Gene ID</b>	5564
<b>Gene Symbol</b>	PRKAB1
<b>Uniprot ID</b>	AAKB1_HUMAN
<b>Immunogen</b>	
<b>Immunogen Region</b>	18-82
<b>Specificity</b>	A synthetic peptide corresponding to a sequence within amino acids 18-82 of human AMPK Beta 1 (NP_006244.2).
<b>Immunogen Sequence</b>	KTPRRDSSGGTKDGRPKIL MDSPEDADLFHSEEIKAPEK EEFLAWQHDLEVNDKAPAQA RPTVF



Western blot analysis of extracts of MCF7 cells, using AMPK Beta 1 Rabbit polyclonal antibody (STJ11104416) at 1:1000 dilution. Secondary antibody: HRP-Goat Anti-Rabbit IgG (H+L) (STJ5000856) at 1:10000 dilution. Lysates/proteins: 25 µg per lane. Blocking buffer: 3% nonfat dry milk in TBST. Detection: ECL Basic Kit. Exposure time: 90s.

This product is suitable for in-vitro studies under the RESEARCH USE ONLY [RUO] licence. This product must not be used as for diagnostic or other medical purposes.  
St John's Laboratory Ltd, Knowledge Dock Business Centre, University Way, London, E16 2RD | Tel: 0208 223 3081