

Anti-PRKAA1 antibody (421-520) (STJ11104415)

STJ11104415

GENERAL INFORMATION

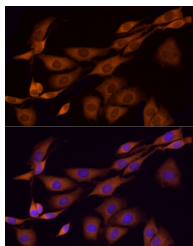
Product Type	Primary antibodies
Short Description	
Applications	WB/IF/ICC/ELISA
Host/Source	Rabbit
Reactivity	Human

PRODUCT PROPERTIES

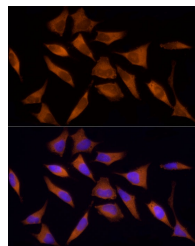
Clonality	Polyclonal
Clone ID	
Concentration	Lot specific
Conjugation	Unconjugated
Purification	Affinity purification
Dilution Range	WB:1:500-1:2000 IF/ICC:1:50-1:200 ELISA:Recommended starting concentration is 1 µg/mL. Please optimize the concentration based on your specific assay requirements.
Formulation	PBS with 0.05% Proclin300, 50% Glycerol, pH 7.3.
Isotype	IgG
Storage	Store at -20°C for up to 1 year from the date of receipt, and avoid repeat freeze-thaw cycles.
Instruction	

TARGET INFORMATION

Gene ID	5562
Gene Symbol	PRKAA1
Uniprot ID	AAPK1_HUMAN
Immunogen	
Immunogen Region	421-520
Specificity	A synthetic peptide corresponding to a sequence within amino acids 421-520 of human AMPK Alpha 1. (NP_006242.5).
Immunogen Sequence	MAEVCRAIKQLDYEWKVVNP YYLRVRRKNPVTSTYSKMSL QLYQVDSRTYLLDFRSIDDE ITEAKSGTATPQRSGSVSNY RSCQRSDSDAEAQGKSSEVS



Immunofluorescence analysis of PC-12 cells using AMPK Alpha 1 Rabbit polyclonal antibody (STJ11104415) at dilution of 1:100 (40x lens). Blue: DAPI for nuclear staining.



Immunofluorescence analysis of HeLa cells using AMPK Alpha 1 Rabbit polyclonal antibody (STJ11104415) at dilution of 1:100 (40x lens). Blue: DAPI for nuclear staining.