

Anti-PDHA1 antibody (30-390) (STJ11104401)
STJ11104401

GENERAL INFORMATION

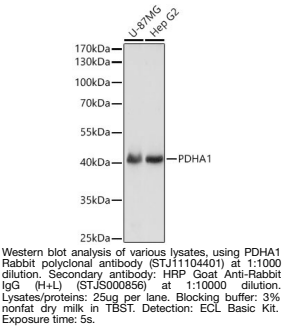
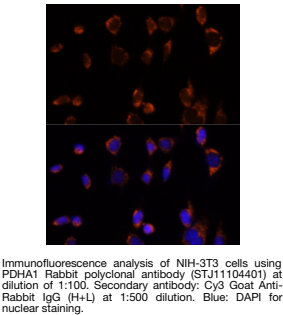
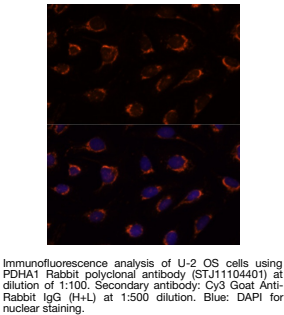
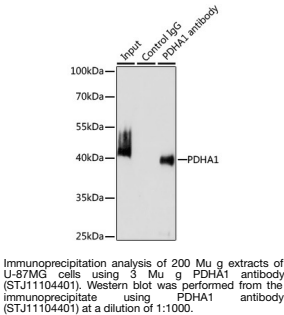
Product Type	Primary antibodies
Short Description	
Applications	WB/IF/ICC/IP/ELISA
Host/Source	Rabbit
Reactivity	Human/Mouse

PRODUCT PROPERTIES

Clonality	Polyclonal
Clone ID	
Concentration	Lot specific
Conjugation	Unconjugated
Purification	Affinity purification
Dilution Range	WB:1:500-1:1000 IF/CC:1:50-1:200 IP:0.5 Mu g-4 Mu g antibody for 200 Mu g-400 Mu g extracts of whole cells ELISA:Recommended starting concentration is 1 Mu g/mL. Please optimize the concentration based on your specific assay requirements
Formulation	PBS with 0.01% Thimerosal, 50% Glycerol, pH 7.3.
Isotype	IgG
Storage Instruction	Store at-20°C for up to 1 year from the date of receipt, and avoid repeat freeze-thaw cycles.

TARGET INFORMATION

Gene ID	5160
Gene Symbol	PDHA1
Uniprot ID	ODPA_HUMAN
Immunogen	
Immunogen Region	30-390
Specificity	Recombinant fusion protein containing a sequence corresponding to amino acids 30-390 of PDHA1 (NP_000275.1).
Immunogen Sequence	FANDATFEIKKCDLHRLEEG PPVTVTLTREDGLKYRMMQ TVRRMELKADQLYKQKIIRG FCHLCDGGEACCVGLEAGIN PTDLHLITAYRAHGFTFTRGL SVREILAELTGRKGCGAKG GGSMMHYAKNFYGGNGIVGA QVPLGAGIALACKYNGKDEV CLTLYGDGAANQGQIFEAYN MAALWKLPCIFICENRRYGM GTSVERAAASTDYKRGDFI PGLRVDGMDILCVREATRF



This product is suitable for in-vitro studies under the RESEARCH USE ONLY [RUO] licence. This product must not be used as for diagnostic or other medical purposes.
St John's Laboratory Ltd, Knowledge Dock Business Centre, University Way, London, E16 2RD | Tel: 0208 223 3081