

Anti-MYD88 antibody (20-140) (STJ11104377)

STJ11104377

GENERAL INFORMATION

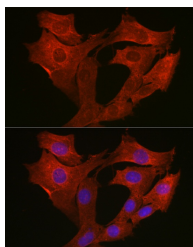
Product Type	Primary antibodies
Short Description	
Applications	WB/IF/ICC/ELISA
Host/Source	Rabbit
Reactivity	Human/Mouse/Rat

PRODUCT PROPERTIES

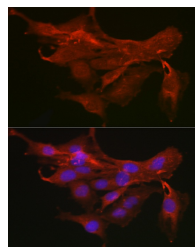
Clonality	Polyclonal
Clone ID	
Concentration	Lot specific
Conjugation	Unconjugated
Purification	Affinity purification
Dilution Range	WB:1:500-1:1000 IF/ICC:1:50-1:200 ELISA:Recommended starting concentration is 1 µg/mL. Please optimize the concentration based on your specific assay requirements.
Formulation	PBS with 0.05% Proclin300, 50% Glycerol, pH 7.3.
Isotype	IgG
Storage Instruction	Store at -20°C for up to 1 year from the date of receipt, and avoid repeat freeze-thaw cycles.

TARGET INFORMATION

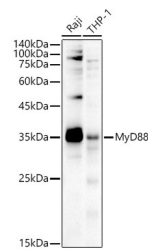
Gene ID	4615
Gene Symbol	MYD88
Uniprot ID	MYD88_HUMAN
Immunogen	
Immunogen Region	20-140
Specificity	Recombinant fusion protein containing a sequence corresponding to amino acids 20-140 of human MyD88 (NP_002459.2).
Immunogen Sequence	GAGSAAPVSSTSLPLAALN MRVRRRLSLFLNVRTQVAAD WTALAEEMDFEYLEIRQLET QADPTGRLLDAWQGRPGASV GRLELLTLKLRDDVLELGL PSIEEDCQKYILKQQQEEAE K



Immunofluorescence analysis of NIH/3T3 cells using MyD88 Rabbit polyclonal antibody (STJ11104377) at dilution of 1:200 (40x lens). Blue: DAPI for nuclear staining.



Immunofluorescence analysis of C6 cells using MyD88 Rabbit polyclonal antibody (STJ11104377) at dilution of 1:200 (40x lens). Blue: DAPI for nuclear staining.



Western blot analysis of extracts of various cell lines, using MyD88 antibody (STJ11104377) at 1:1000 dilution. Secondary antibody: HRP-Goat Anti-Rabbit IgG (H+L) (STJ5000856) at 1:10000 dilution. Lysates/proteins: 25 µg per lane. Blocking buffer: 3% nonfat dry milk in TBST. Detection: ECL Basic Kit. Exposure time: 30s.