

Anti-MTAP antibody (1-283) (STJ11104375)

GENERAL INFORMATION

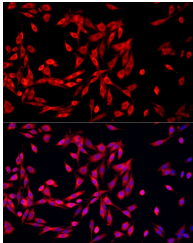
Product Type	Primary antibodies
Short Description	
Applications	WB/IF/ICC/ELISA
Host/Source	Rabbit
Reactivity	Human/Mouse/Rat

PRODUCT PROPERTIES

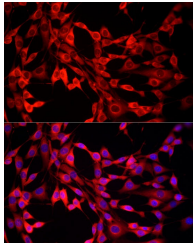
Clonality	Polyclonal
Clone ID	
Concentration	Lot specific
Conjugation	Unconjugated
Purification	Affinity purification
Dilution	WB:1:100-1:500
Range	IF/CC:1:50-1:200
	ELISA:Recommended starting concentration is 1 Mu g/mL. Please optimize the concentration based on your specific assay requirements.
Formulation	PBS with 0.02% Sodium Azide, 50% Glycerol, pH 7.3.
Isotype	IgG
Storage Instruction	Store at -20°C for up to 1 year from the date of receipt, and avoid repeat freeze-thaw cycles.

TARGET INFORMATION

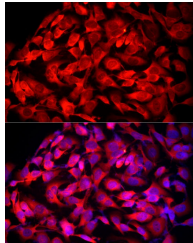
Gene ID	4507
Gene Symbol	MTAP
Uniprot ID	MTAP_HUMAN
Immunogen	
Immunogen Region	1-283
Specificity	Recombinant fusion protein containing a sequence corresponding to amino acids 1-283 of human MTAP (NP_002442.2).
Immunogen Sequence	MASGTTTTAVKIGIIGGTGL DDPEILEGRTEKYVDTPFGK PSDALILGKIKNVDCVLLAR HGRQHTIMPSKVNYQANIWA LKEEGCTHVIVTTACGSLRE EIQPGDIVIIDQFIDRTTMR PQSFYDGSWSCARGVCHIPM AEPFCPKTREVLIAKLLG LRCHSKGTMVTIEGPRFSSR AESFMFRTWGADVINMTTVP EVVLAKEAGICYASIAMATD YDCWKEHEEAVSVDRVLKT



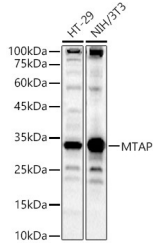
Immunofluorescence analysis of PC-12 cells using MTAP Rabbit polyclonal antibody (STJ11104375) at dilution of 1:50 (40x lens). Blue: DAPI for nuclear staining.



Immunofluorescence analysis of NIH/3T3 cells using MTAP Rabbit polyclonal antibody (STJ11104375) at dilution of 1:50 (40x lens). Blue: DAPI for nuclear staining.



Immunofluorescence analysis of HeLa cells using MTAP Rabbit polyclonal antibody (STJ11104375) at dilution of 1:50 (40x lens). Blue: DAPI for nuclear staining.



Western blot analysis of various lysates, using MTAP Rabbit polyclonal antibody (STJ11104375) at 1:400 dilution. Secondary antibody: HRP Goat Anti-Rabbit IgG (H+L) (STJ5000896) at 1:10000 dilution. Lysates/proteins: 25ug per lane. Blocking buffer: 3% nonfat dry milk in TBST. Detection: ECL Basic Kit. Exposure time: 180s.

This product is suitable for in-vitro studies under the RESEARCH USE ONLY [RUO] licence. This product must not be used as for diagnostic or other medical purposes.
St John's Laboratory Ltd, Knowledge Dock Business Centre, University Way, London, E16 2RD | Tel: 0208 223 3081