

Anti-TRMT2A antibody (1-250) (STJ11104340)
STJ11104340

GENERAL INFORMATION

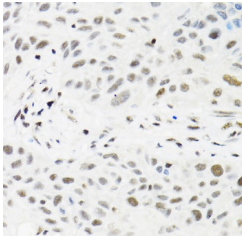
Product Type	Primary antibodies
Short Description	
Applications	WB/IHC-P/ELISA
Host/Source	Rabbit
Reactivity	Human

PRODUCT PROPERTIES

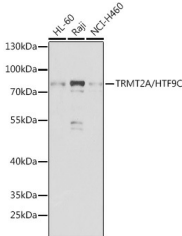
Clonality	Polyclonal
Clone ID	
Concentration	Lot specific
Conjugation	Unconjugated
Purification	Affinity purification
Dilution	WB: 1:500-1:2000
Range	IHC-P: 1:50-1:200 ELISA: Recommended starting concentration is 1 µg/mL. Please optimize the concentration based on your specific assay requirements.
Formulation	PBS with 0.02% Sodium Azide, 50% Glycerol, pH 7.3.
Isotype	IgG
Storage Instruction	Store at -20°C for up to 1 year from the date of receipt, and avoid repeat freeze-thaw cycles.

TARGET INFORMATION

Gene ID	27037
Gene Symbol	TRMT2A
Uniprot ID	TRM2A_HUMAN
Immunogen	
Immunogen Region	1-250
Specificity	Recombinant fusion protein containing a sequence corresponding to amino acids 1-250 of human TRMT2A/HTF9C (NP_073564.3).
Immunogen Sequence	MSENLNDEGPKPMESCGQES SSALSCTVSVPPAAPAAL EKEGAGAAATGPGPQGLY SYIRDDLFTSEIFKLELQNV PRHASFSDVRRFLGRFLQP HKTCLFGQPPCAVTFRSAA ERDKALRVLHGALWKGRLPS VRLARPKADPMARRRRQEGE SEPPVTRVADVVTPLWTPY AEQLERKQLECEQVLQKLAK EIGSTNRALLPWLEQRHKH NKACCPLEGVRPSPQQTEY



Immunohistochemistry analysis of TRMT2A/HTF9C in paraffin-embedded human lung cancer using TRMT2A/HTF9C Rabbit polyclonal antibody (STJ11104340) at dilution of 1:100 (40x lens). Perform microwave antigen retrieval with 10 mM PBS buffer pH 7.2 before commencing with immunohistochemistry staining protocol.



Western blot analysis of various lysates using TRMT2A/HTF9C Rabbit polyclonal antibody (STJ11104340) at 1:1000 dilution. Secondary antibody: HRP Goat Anti-Rabbit IgG (H+L) (STJ3000856) at 1:10000 dilution. Lysates/proteins: 25 µg per lane. Blocking buffer: 3% nonfat dry milk in TBST. Detection: ECL Basic Kit. Exposure time: 90s.

This product is suitable for in-vitro studies under the RESEARCH USE ONLY [RUO] licence. This product must not be used as for diagnostic or other medical purposes.
St John's Laboratory Ltd, Knowledge Dock Business Centre, University Way, London, E16 2RD | Tel: 0208 223 3081