

Anti-PARP1 antibody (200-300) (STJ11104306)

STJ11104306

GENERAL INFORMATION

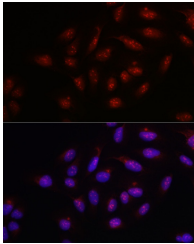
Product Type	Primary antibodies
Short Description	
Applications	WB/IHC-P/IF/ICC/ELISA
Host/Source	Rabbit
Reactivity	Human/Mouse/Rat

PRODUCT PROPERTIES

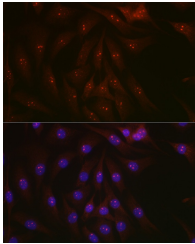
Clonality	Polyclonal
Clone ID	
Concentration	Lot specific
Conjugation	Unconjugated
Purification	Affinity purification
Dilution Range	WB:1:2000-1:6000 IHC-P:1:50-1:200 IF/ICC:1:50-1:200 ELISA:Recommended starting concentration is 1 Mu g/mL. Please optimize the concentration based on your specific assay requirements.
Formulation	PBS with 0.09% Sodium Azide, 50% Glycerol, pH 7.3.
Isotype	IgG
Storage	Store at -20°C for up to 1 year from the date of receipt, and avoid repeat freeze-thaw cycles.
Instruction	

TARGET INFORMATION

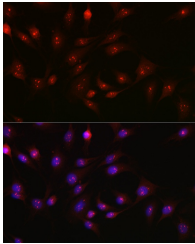
Gene ID	142
Gene Symbol	PARP1
Uniprot ID	PARP1_HUMAN
Immunogen	
Immunogen Region	200-300
Specificity	A synthetic peptide corresponding to a sequence within amino acids 200-300 of human PARP1 (NP_001609.2).
Immunogen Sequence	PGVKSEGRKRGDEVGVDEV AKKKSKEKDKDSKLEKALK AQNDLIWNKDELKKVCSTN DLKELLIFNKQQVPSGESAI LDRVADGMVFGALLPCECS G



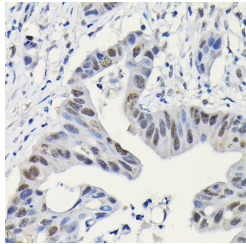
Immunofluorescence analysis of U-2 OS cells using [KO Validated] PARP1 Rabbit polyclonal antibody (STJ11104306) at dilution of 1:100 (40x lens). Blue: DAPI for nuclear staining.



Immunofluorescence analysis of NIH-3T3 cells using [KO Validated] PARP1 Rabbit polyclonal antibody (STJ11104306) at dilution of 1:100 (40x lens). Blue: DAPI for nuclear staining.



Immunofluorescence analysis of C6 cells using [KO Validated] PARP1 Rabbit polyclonal antibody (STJ11104306) at dilution of 1:100 (40x lens). Blue: DAPI for nuclear staining.



Immunohistochemistry analysis of paraffin-embedded human colon carcinoma using [KO Validated] PARP1 Rabbit polyclonal antibody (STJ11104306) at dilution of 1:200 (40x lens). Perform high pressure antigen retrieval with 10 mM citrate buffer pH 6.0 before commencing with immunohistochemistry staining protocol.

This product is suitable for in-vitro studies under the RESEARCH USE ONLY [RUO] licence. This product must not be used as for diagnostic or other medical purposes.
St John's Laboratory Ltd, Knowledge Dock Business Centre, University Way, London, E16 2RD | Tel: 0208 223 3081