

Anti-CPS1 antibody (820-930) (STJ11104303)

STJ11104303

GENERAL INFORMATION

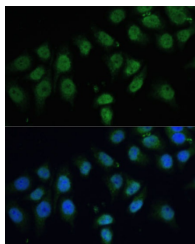
Product Type	Primary antibodies
Short Description	
Applications	WB/IF/ICC/ELISA
Host/Source	Rabbit
Reactivity	Human/Rat

PRODUCT PROPERTIES

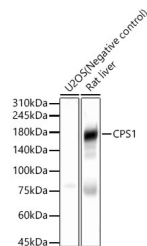
Clonality	Polyclonal
Clone ID	
Concentration	Lot specific
Conjugation	Unconjugated
Purification	Affinity purification
Dilution Range	WB:1:100-1:500 IF/ICC:1:50-1:200 ELISA:Recommended starting concentration is 1 µg/mL. Please optimize the concentration based on your specific assay requirements.
Formulation	PBS with 0.02% Sodium Azide, 50% Glycerol, pH 7.3.
Isotype	IgG
Storage	Store at -20°C for up to 1 year from the date of receipt, and avoid repeat freeze-thaw cycles.
Instruction	

TARGET INFORMATION

Gene ID	1373
Gene Symbol	CPS1
Uniprot ID	CPSM_HUMAN
Immunogen	
Immunogen Region	820-930
Specificity	Recombinant fusion protein containing a sequence corresponding to amino acids 820-930 of human CPS1 (NP_001116105.1).
Immunogen Sequence	RMCHPSIEGFTPLPMNKEW PSNLDLRKELSEPSSTRIYA IAKAIDNMSLDEIEKLTLYI DKWFLYKMRDILNMEKTLKG LNSESMTEETLKRAKEIGFS DKQISKCLGLT



Immunofluorescence analysis of HeLa cells using CPS1 Polyclonal Antibody (STJ11104303) at dilution of 1:100 (40x lens). Blue: DAPI for nuclear staining.



Western blot analysis of various lysates, using CPS1 Rabbit polyclonal antibody (STJ11104303) at 1:500 dilution. Secondary antibody: HRP Goat Anti-Rabbit IgG (H+L) (STJS000856) at 1:10000 dilution. Lysates/proteins: 25 µg per lane. Blocking buffer: 3% nonfat dry milk in TBS-T. Detection: ECL Basic Kit. Exposure time: 60s.

This product is suitable for in-vitro studies under the RESEARCH USE ONLY [RUO] licence. This product must not be used as for diagnostic or other medical purposes.
St John's Laboratory Ltd, Knowledge Dock Business Centre, University Way, London, E16 2RD | Tel: 0208 223 3081