

Anti-UBE2C antibody (1-179) (STJ11104295)

STJ11104295

GENERAL INFORMATION

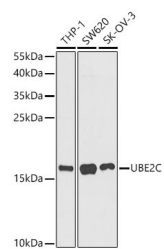
Product Type	Primary antibodies
Short Description	
Applications	WB/ELISA
Host/Source	Rabbit
Reactivity	Human

PRODUCT PROPERTIES

Clonality	Polyclonal
Clone ID	
Concentration	Lot specific
Conjugation	Unconjugated
Purification	Affinity purification
Dilution	WB:1:500-1:1000
Range	ELISA:Recommended starting concentration is 1 Mu g/mL. Please optimize the concentration based on your specific assay requirements.
Formulation	PBS with 0.02% Sodium Azide, 50% Glycerol, pH 7.3.
Isotype	IgG
Storage	Store at -20°C for up to 1 year from the date of receipt, and avoid repeat freeze-thaw cycles.
Instruction	

TARGET INFORMATION

Gene ID	11065
Gene Symbol	UBE2C
Uniprot ID	UBE2C_HUMAN
Immunogen	
Immunogen Region	1-179
Specificity	Recombinant Protein corresponding to a sequence within amino acids 1-179 of human UBE2C (NP_008950.1).
Immunogen Sequence	MASQNRDPAATSVAARKGA EPSGGAARGPVGKRLQQLM TLMMSGDKGISAFPESDNLF KLVGTIHGAAGTVYEDLRYK LSLEFPSPGYPNAPTVMKLT PCYHPNVDQTGNICLDILKE KWSALYDVRTILLSIQSLG EPNIDSPLNTHAAELWKNPT AFKKYLQETYSKQVTSQEP



Western blot analysis of various lysates using UBE2C Rabbit polyclonal antibody (STJ11104295) at 1:1000 dilution. Secondary antibody: HRP Goat Anti-Rabbit IgG (H+L) (STJ5000856) at 1:10000 dilution. Lysates/ proteins: 25 Mu g per lane. Blocking buffer: 3 % nonfat dry milk in TBST. Detection: ECL Basic Kit. Exposure time: 90s.

This product is suitable for in-vitro studies under the RESEARCH USE ONLY [RUO] licence. This product must not be used as for diagnostic or other medical purposes.
St John's Laboratory Ltd, Knowledge Dock Business Centre, University Way, London, E16 2RD | Tel: 0208 223 3081