

Anti-CDKN1A antibody (1-164) (STJ11104284)
STJ11104284

GENERAL INFORMATION

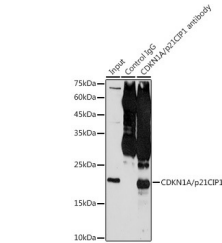
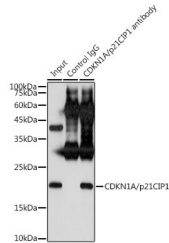
Product Type	Primary antibodies
Short Description	
Applications	IHC-P/I/P/ELISA
Host/Source	Rabbit
Reactivity	Human

PRODUCT PROPERTIES

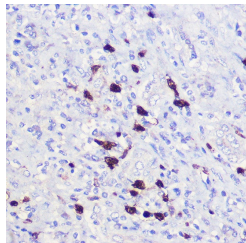
Clonality	Polyclonal
Clone ID	
Concentration	Lot specific
Conjugation	Unconjugated
Purification	Affinity purification
Dilution Range	WB:1:500-1:1000 IHC-P:1:50-1:200 IP:0.5 Mu g-4 Mu g antibody for 200 Mu g-400 Mu g extracts of whole cells ELISA:Recommended starting concentration is 1 Mu g/mL. Please optimize the concentration based on your specific assay requirements.
Formulation	PBS with 0.05% Proclin300, 50% Glycerol, pH 7.3.
Isotype	IgG
Storage Instruction	Store at-20°C for up to 1 year from the date of receipt, and avoid repeat freeze-thaw cycles.

TARGET INFORMATION

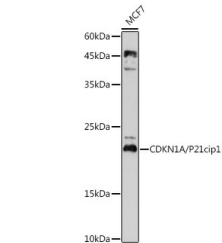
Gene ID	1026
Gene Symbol	CDKN1A
Uniprot ID	CDN1A_HUMAN
Immunogen Region	1-164
Specificity	Recombinant fusion protein containing a sequence corresponding to amino acids 1-164 of human CDKN1A/p21CIP1 (NP_000380.1).
Immunogen Sequence	MSEPAGDVRQNPCKGSKACRR LFQPVDSQLSRDCDALMAG CIQEARERWNFDFVTETPLE GDFAWERVRLGLPKLYLPT GPRRGRDELGGRRPGTSPA LLQGTAEEDHVDLSLSCTLV PRSGEQAEGSPGGPGDSQGR KRRQTSMTDFYHSKRRLIFS KRKP



Immunoprecipitation analysis of 300 Mu g extracts of MCF7 cells using 3 Mu g CDKN1A/p21CIP1 antibody (STJ11104284). Western blot was performed from the immunoprecipitate using CDKN1A/p21CIP1 antibody (STJ11104284) at a dilution of 1:500.



Immunohistochemistry analysis of CDKN1A/p21CIP1 in paraffin-embedded human liver tissue using CDKN1A/p21CIP1 Rabbit polyclonal antibody (STJ11104284) at dilution of 1:100 (40x lens). Perform high pressure antigen retrieval with 10 mM citrate buffer pH 6.0 before commencing with immunohistochemistry staining protocol.



Western blot analysis of lysates from MCF7 cells, using CDKN1A/p21CIP1 Rabbit polyclonal antibody (STJ11104284) at 1:1000 dilution. Secondary antibody: HRP Goat Anti-Rabbit IgG (H+L) (STJ5000856) at 1:10000 dilution. Lysates/proteins: 25 Mu g per lane. Blocking buffer: 3% nonfat dry milk in TBST. Detection: ECL Basic Kit. Exposure time: 180s.

This product is suitable for in-vitro studies under the RESEARCH USE ONLY [RUO] licence. This product must not be used as for diagnostic or other medical purposes.
St John's Laboratory Ltd, Knowledge Dock Business Centre, University Way, London, E16 2RD | Tel: 0208 223 3081