

## Anti-CASP1 antibody (198-297) (STJ11104266)

STJ11104266

### GENERAL INFORMATION

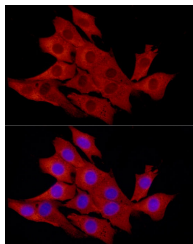
<b>Product Type</b>	Primary antibodies
<b>Short Description</b>	
<b>Applications</b>	IHC-P/IF/ICC/ELISA
<b>Host/Source</b>	Rabbit
<b>Reactivity</b>	Human/Mouse

### PRODUCT PROPERTIES

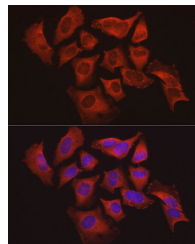
<b>Clonality</b>	Polyclonal
<b>Clone ID</b>	
<b>Concentration</b>	Lot specific
<b>Conjugation</b>	Unconjugated
<b>Purification</b>	Affinity purification
<b>Dilution Range</b>	IHC-P:1:50-1:200 IF/ICC:1:50-1:200 ELISA:Recommended starting concentration is 1 µg/mL. Please optimize the concentration based on your specific assay requirements.
<b>Formulation</b>	PBS with 0.05% Proclin300, 50% Glycerol, pH 7.3.
<b>Isotype</b>	IgG
<b>Storage Instruction</b>	Store at -20°C for up to 1 year from the date of receipt, and avoid repeat freeze-thaw cycles.

### TARGET INFORMATION

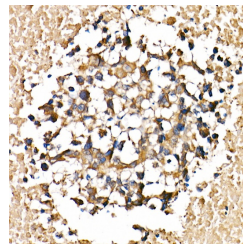
<b>Gene ID</b>	834
<b>Gene Symbol</b>	CASP1
<b>Uniprot ID</b>	CASP1_HUMAN
<b>Immunogen</b>	
<b>Immunogen Region</b>	198-297
<b>Specificity</b>	A synthetic peptide corresponding to a sequence within amino acids 198-297 of human Caspase-1 (NP_150634.1).
<b>Immunogen Sequence</b>	YSVDVKKNLTASDMTTELEA FAHRPEHKTSDFLVFMSH GIREGICGKKHSEQVPDILQ LNAIFNMLNTKNCPSLKDCKP KVIIQACRGDSPGVVWFKD



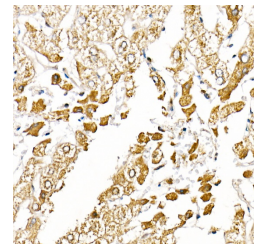
Immunofluorescence analysis of NIH/3T3 cells using Caspase-1 Rabbit polyclonal antibody (STJ11104266) at dilution of 1:50 (40x lens). Blue: DAPI for nuclear staining.



Immunofluorescence analysis of HeLa cells using Caspase-1 Rabbit polyclonal antibody (STJ11104266) at dilution of 1:50 (40x lens). Blue: DAPI for nuclear staining.



Immunohistochemistry analysis of paraffin-embedded human lung cancer using Caspase-1 Rabbit polyclonal antibody (STJ11104266) at dilution of 1:20 (40x lens). Perform high pressure antigen retrieval with 10 mM citrate buffer pH 6.0 before commencing with immunohistochemistry staining protocol.



Immunohistochemistry analysis of paraffin-embedded human liver cancer using Caspase-1 Rabbit polyclonal antibody (STJ11104266) at dilution of 1:20 (40x lens). Perform high pressure antigen retrieval with 10 mM citrate buffer pH 6.0 before commencing with immunohistochemistry staining protocol.