

Anti-DET1 antibody (350-450) (STJ11104256)

STJ11104256

GENERAL INFORMATION

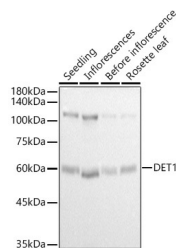
Product Type	Primary antibodies
Short Description	
Applications	WB/ELISA
Host/Source	Rabbit
Reactivity	A.thaliana

PRODUCT PROPERTIES

Clonality	Polyclonal
Clone ID	
Concentration	Lot specific
Conjugation	Unconjugated
Purification	Affinity purification
Dilution Range	WB:1:500-1:1000 ELISA:Recommended starting concentration is 1 Mu g/mL. Please optimize the concentration based on your specific assay requirements.
Formulation	PBS with 0.05% Proclin300, 50% Glycerol, pH 7.3.
Isotype	IgG
Storage	Store at -20°C for up to 1 year from the date of receipt, and avoid repeat freeze-thaw cycles.
Instruction	

TARGET INFORMATION

Gene ID	
Gene Symbol	
Uniprot ID	
Immunogen	
Immunogen Region	350-450
Specificity	A synthetic peptide corresponding to a sequence within amino acids 350-450 of arabidopsis thaliana DET1 (NP_192756.2).
Immunogen Sequence	GGVTRSDHHPAFFAVYNME TTDIVAFYQNSAEDLYQLFE QFSDHFTVSSSTPFMNFVTS HSNNVYALEQLKYTKNKSNS FSQFVKMKLLSLPFSCQSQS P



Western blot analysis of extracts of various tissues from Arabidopsis thaliana, using DET1 Rabbit polyclonal antibody (STJ11104256) at 1:1000 dilution. Secondary antibody: HRP Goat Anti-Rabbit IgG (H+L) (STJUS000856) at 1:10000 dilution. Lysates/proteins: 25 Mu g per lane. Blocking buffer: 3% nonfat dry milk in TBST. Detection: ECL Basic Kit. Exposure time: 10s.

This product is suitable for in-vitro studies under the RESEARCH USE ONLY [RUO] licence. This product must not be used as for diagnostic or other medical purposes.
St John's Laboratory Ltd, Knowledge Dock Business Centre, University Way, London, E16 2RD | Tel: 0208 223 3081