

Anti-ANPEP antibody (69-967) [S4251RM] (STJ11104251)
STJ11104251

GENERAL INFORMATION

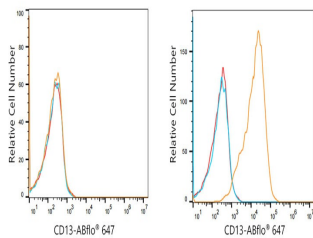
Product Type	Primary antibodies
Short Description	
Applications	WB/IHC-P/FC/ELISA
Host/Source	Rabbit
Reactivity	Human

PRODUCT PROPERTIES

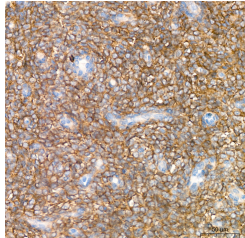
Clonality	Monoclonal
Clone ID	S4251RM
Concentration	Lot specific
Conjugation	Unconjugated
Purification	Affinity purification
Dilution	WB:1:10000-1:40000
Range	IHC-P:1:100-1:500 FC:1:50-1:200 ELISA:Recommended starting concentration is 1 Mu g/mL. Please optimize the concentration based on your specific assay requirements.
Formulation	PBS with 0.05% Proclin300, 0.05% BSA, 50% Glycerol, pH 7.3.
Isotype	IgG
Storage	Store at -20°C for up to 1 year from the date of receipt, and avoid repeat freeze-thaw cycles.
Instruction	

TARGET INFORMATION

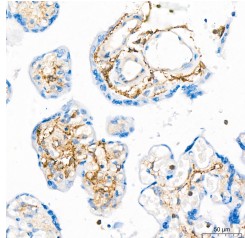
Gene ID	290
Gene Symbol	ANPEP
Uniprot ID	AMPN_HUMAN
Immunogen	
Immunogen Region	69-967
Specificity	Recombinant fusion protein containing a sequence corresponding to amino acids 69-967 of human CD13/ANPEP (NP_001141.2).
Immunogen Sequence	KAWNRYRLPNTLKPDSYRVT LRPYLTPNDRGLYVFKGSST VRFTCKEATDVIIHKKLN YTL SQGHRVLRGVGGSQPP DIDKTELVEPTEYLVVHLKG SLVKDSQYEMDSEFEGELAD LAGFYRSEYMEGNVRKWA TTQMQAADARKSFPCFDEPA MKAEFNITLIHPKDLTALS NMLPKGPSTPLPEDPNWNVTE FHHTPKMSTYLLAFIVSEFD YVEKQASNGVLIRIWARPS



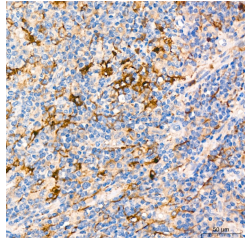
Flow cytometry:1X10⁶ Jurkat cells (negative control, left) and HepG2 cells (right) were surface-stained with CD13/ANPEP Rabbit monoclonal antibody (STJ11104251, 2.5 Mu g/mL, orange line) or Rabbit IgG isotype control (10 Mu g/mL, blue line), followed by Alexa Fluor 647 conjugated goat anti-mouse polyclonal antibody (1:600 dilution) staining. Non-fluorescently stained cells were used as blank control (red line).



Immunohistochemistry analysis of CD13/ANPEP in paraffin-embedded Human endometrial stromal sarcoma using CD13/ANPEP Rabbit monoclonal antibody (STJ11104251) at dilution of 1:400 (40x lens). Perform high pressure antigen retrieval with 10 mM Tris/EDTA buffer pH 9.0 before commencing with immunohistochemistry staining protocol.



Immunohistochemistry analysis of CD13/ANPEP in paraffin-embedded human placenta using CD13/ANPEP Rabbit monoclonal antibody (STJ11104251) at dilution of 1:400 (40x lens). Perform high pressure antigen retrieval with 10 mM Tris/EDTA buffer pH 9.0 before commencing with immunohistochemistry staining protocol.



Immunohistochemistry analysis of CD13/ANPEP in paraffin-embedded human extranodal NK-T cell lymphoma using CD13/ANPEP Rabbit monoclonal antibody (STJ11104251) at dilution of 1:400 (40x lens). Perform high pressure antigen retrieval with 10 mM Tris/EDTA buffer pH 9.0 before commencing with immunohistochemistry staining protocol.

This product is suitable for in-vitro studies under the RESEARCH USE ONLY [RUO] licence. This product must not be used as for diagnostic or other medical purposes.
St John's Laboratory Ltd, Knowledge Dock Business Centre, University Way, London, E16 2RD | Tel: 0208 223 3081